

T 225 R 14E M Wm.

A	2	3	4	5	6	7	8	9	10	11	12	13	14	15	16	17	18	19	20	21	22	23	24	25
B	+	+	+	+	+	+	+	+	+	+	+	+	+	+	+	+	+	+	+	+	+	+	+	+
C	6	+	5	+	4	+	+	+	3	+	+	+	+	+	+	+	+	+	+	+	+	+	+	+
D	+	+	+	+	+	+	+	+	+	+	+	+	+	+	+	+	+	+	+	+	+	+	+	+
E	+	+	+	+	+	+	+	+	+	+	+	+	+	+	+	+	+	+	+	+	+	+	+	+
F	+	+	+	+	+	+	+	+	+	+	+	+	+	+	+	+	+	+	+	+	+	+	+	+
G	7	+	8	+	9	+	+	+	10	+	+	+	+	+	+	+	+	+	+	+	+	+	+	+
H	+	+	+	+	+	+	+	+	+	+	+	+	+	+	+	+	+	+	+	+	+	+	+	+
I	+	+	+	+	+	+	+	+	+	+	+	+	+	+	+	+	+	+	+	+	+	+	+	+
J	+	+	+	+	+	+	+	+	+	+	+	+	+	+	+	+	+	+	+	+	+	+	+	+
K	+	+	+	+	+	+	+	+	+	+	+	+	+	+	+	+	+	+	+	+	+	+	+	+
L	18	+	17	+	16	+	+	+	15	+	+	+	+	+	+	+	+	+	+	+	+	+	+	+
M	+	+	+	+	+	+	+	+	+	+	+	+	+	+	+	+	+	+	+	+	+	+	+	+
N	+	+	+	+	+	+	+	+	+	+	+	+	+	+	+	+	+	+	+	+	+	+	+	+
O	+	+	+	+	+	+	+	+	+	+	+	+	+	+	+	+	+	+	+	+	+	+	+	+
P	19	+	20	+	21	+	+	+	22	+	+	+	+	+	+	+	+	+	+	+	+	+	+	+
Q	+	+	+	+	+	+	+	+	+	+	+	+	+	+	+	+	+	+	+	+	+	+	+	+
R	+	+	+	+	+	+	+	+	+	+	+	+	+	+	+	+	+	+	+	+	+	+	+	+
S	+	+	+	+	+	+	+	+	+	+	+	+	+	+	+	+	+	+	+	+	+	+	+	+
T	30	+	29	+	28	+	+	+	27	+	+	+	+	+	+	+	+	+	+	+	+	+	+	+
U	+	+	+	+	+	+	+	+	+	+	+	+	+	+	+	+	+	+	+	+	+	+	+	+
V	+	+	+	+	+	+	+	+	+	+	+	+	+	+	+	+	+	+	+	+	+	+	+	+
W	+	+	+	+	+	+	+	+	+	+	+	+	+	+	+	+	+	+	+	+	+	+	+	+
X	31	+	32	+	33	+	+	+	34	+	+	+	+	+	+	+	+	+	+	+	+	+	+	+
Y	+	+	+	+	+	+	+	+	+	+	+	+	+	+	+	+	+	+	+	+	+	+	+	+
Z	+	+	+	+	+	+	+	+	+	+	+	+	+	+	+	+	+	+	+	+	+	+	+	+

**LEGEND**

○ = Corner having information on form 5680-2 in this file.

LEGEND CONFORMS TO

REPORTING FORM MPB 2/80

**FILING INSTRUCTION**

File 5680-2 card record by letter and number coordinates behind the file guide for the township in which it falls.

File the 5680-2 card record by letter and then by number i.e., all A cards first, then B cards etc.

The first card behind the file guide (if data have been obtained and recorded) will be card A-1 for N.W. Township Corner, then card A-2 for 1/16 corner then card A-3 for 1/4 corner etc.

T225

CORNER RECORD FILE GUIDE (Rectangular Surveys)

5

R13  
R14

1

2

3

4

5

6

R14  
R

T225

T235

5680-5

Index  
File No. \_\_\_\_\_

CORNER RECORD (SEARCH)  
(Ref. FSM 7151.4)

Tract or  
Survey No. \_\_\_\_\_

Cor.  
No. A-01

T 22 S. R. 14 E. R.D. FT. ROCK County DESCHUTES See Cor

Merid. WILLAMETTE N.F. DESCHUTES State OREGON

SEE: Z-25  
T 21 S R 13 E

Fnd 9/15/53 M.L.C.

Put sign 248 FT. S. on S. side of Rd  
Also " " 1188 " " " N. " " "

CF

Index

File No.

22 S. R. 14 E.

R.D.

FT. ROCK

County

DES.

Merid. WILLAMETTE

N.F.

DESCHUTES

State

OREGON

CORNER RECORD (SEARCH)

(Ref. FSM 7151.4)

Tract or

Survey No.

Cor.

No.

A-05

SEC. COR.

SEE: 2-05  
T 21 S R 14 E

Loc. marker 115' S. 9/15/53 M.L.C.

BT FD  
5/77

Index  
File No. \_\_\_\_\_  
R. D. 22 s. R. 14 E. R.D. FT. ROCK County \_\_\_\_\_  
Merid. WILLAMETTE N.F. DESCHUTES State OREGON

CORNER RECORD (SEARCH)  
(Ref. FSM 7151.4)  
Tract or Survey No. \_\_\_\_\_  
Cor. No. A-09  
SEC. COR.

SEE: Z-09  
T215 R14E

2 BT's  
fd  
5/77

Index  
File No.

CORNER RECORD (SEARCH)

(Ref. FSM 7151.4)

Tract or  
Survey No.

Cor.  
No.

T 22 S. R. 14 E. R.D.

FT. ROCK County

DES.

N/4 COR. SEC. 3

Merid. WILLAMETTE N.F.

DESCHUTES State

OREGON

5/4 COR. SEC. 34

A-15

SEE: 2-15  
T215 R14E

SF/NF

Index  
File No.

CORNER RECORD (SEARCH)

(Ref. FSM 7151.4)

Tract or  
Survey No.

Cor.  
No.

22 S. R. 14 E. R.D.

FT. ROCK County

DES.

SEC. COR.

Merid. WILLAMETTE N.F.

DESCHUTES State

OREGON

A-17

SEE: Z-17

T215 R14E

2 BTL  
fd 5/77

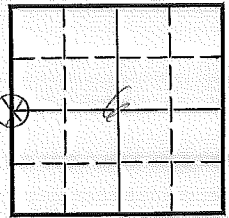
# LAND CORNER RECORD

(Rectangular)

C-1 5680-2

1. T 22S R 14E No. C-1 Cor. 1/4 Mer. Will State Oregon N. F. Deachutes Dist. Forest Rock

2. Corner Status



3. Original Description \_\_\_\_\_ Vol. \_\_\_\_\_ Page \_\_\_\_\_ Where Recorded \_\_\_\_\_

4. Description of Corners:

5. Investigation Notes: See T22S-R13E-Sec 1. No. C-25

7. Photo Identification

Photo No. \_\_\_\_\_  
Ident. By: \_\_\_\_\_

8. Plane Coordinate Position Data

State \_\_\_\_\_ Zone \_\_\_\_\_  
X \_\_\_\_\_  
Y \_\_\_\_\_  
Estab. By \_\_\_\_\_  
Field Book No. \_\_\_\_\_  
Where Filed \_\_\_\_\_

9. Evaluation

Authentic \_\_\_\_\_  
Needs Verif. Monument No  
Re-estab.  Survey  
Land Status AS

6. Signed \_\_\_\_\_ Title \_\_\_\_\_ Date \_\_\_\_\_

C-5

## Section Line Marker Record

#2129 Newberry Crater Road or Trail Fort Rock District

Sec. Line between 5 &amp; 6 22 T. 14 S. R. E.

1/4 Cor. 330 Ft. S  
1/4 or Sec. feet N. S. E. or W.Posted on S side Rd.  
N. S. E. or W. R. or T.Posted 9/14/53 By M. L. C.  
Date

(Approx. \_\_\_\_\_)

Cor. Found (Exact. \_\_\_\_\_) X

(Paced \_\_\_\_\_) X

Distance (Chained \_\_\_\_\_)

6	5	4	3	2	1
7	8	9	10	11	12
18	17	16	15	14	13
19	20	21	22	23	24
30	29	28	27	26	25
31	32	33	34	35	36

Indicate position of marker by  
red X

If marker is on Twp. or Rge. line, reference TWP. NORTH or Rge. EAST of that line.



## Section Line Marker Record

#2129 Newberry Crater Road or Trail Fort Rock District

Sec. Line between 4 & 5 T. 22 S. R. 14 E. \_\_\_\_\_1/4 Cor. 485 Ft. S  
¼ or Sec. feet N. S. E. or W.Posted on N side Rd.  
N. S. E. or W. R. or T.Posted 9/14/53 By M. L. C.  
Date

(Approx. \_\_\_\_\_)

Cor. Found (Exact. X)(Paced X)

Distance (Chained \_\_\_\_\_)

6	5 <del>X</del>	4	3	2	1
7	8	9	10	11	12
18	17	16	15	14	13
19	20	21	22	23	24
30	29	28	27	26	25
31	32	33	34	35	36

Indicate position of marker by  
red X

If marker is on Twp. or Rge. line, reference TWP. NORTH or Rge. EAST of that line.

LAND CORNER RECORD  
(Rectangular)

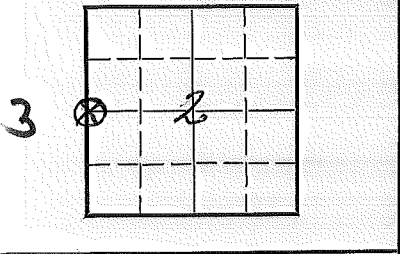
C-17 5680-2

1. T.22S R.11E No. C-17 Cor.  $\frac{1}{4}$  Mer. Wm. State Oregon N. F. Deschutes Dist. Fort Rock

2. Corner Status

3. Original Description \_\_\_\_\_ Vol. \_\_\_\_\_ Page \_\_\_\_\_ Where Recorded \_\_\_\_\_

4. Description of Corners:



5. Investigation Notes:

B.T. 1 1/4" P.P. with grown over markings

7. Photo Identification  
Photo No. \_\_\_\_\_  
Ident. By: \_\_\_\_\_

8. Plane Coordinate Position Data  
State \_\_\_\_\_ Zone \_\_\_\_\_  
X \_\_\_\_\_  
Y \_\_\_\_\_  
Estab. By \_\_\_\_\_  
Field Book No. \_\_\_\_\_  
Where Filed \_\_\_\_\_

9. Evaluation  
Authentic \_\_\_\_\_  
Needs Verif. \_\_\_\_\_ Monument No \_\_\_\_\_  
Re-estab.  Survey \_\_\_\_\_  
Land Status F.S.

6. Signed D. Callahan Title \_\_\_\_\_ Date 8/17/61

Index  
File No. \_\_\_\_\_  
T 22 S. R. 14 E. R.D. FT. ROCK County DESCH. Tract or Survey No. \_\_\_\_\_ Cor. No. E-01  
Merid. WILLAMETTE N.F. DESCHUTES State OREGON See Coy

SEE: E-25  
T22S R13E

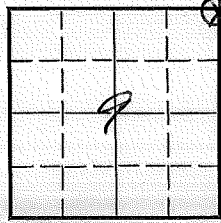
2 BATS

LAND CORNER RECORD

E-13 5680-2

1. T 22S R 11E No. E-13 Cor. Sec. Mer. Wn. State Oregon N. F. Deschutes Dist. Fort Rock

2. Corner Status 4 3 3. Original Description Vol. Page Where Recorded



4. Description of Corners:

5. Investigation Notes: Squared stake - no markings  
 B.T. 18" L.P. marked R11E S9  
 B.T. 14" L.P. marked T22S S9  
 B.T. 8" L.P. marked R11E

Loc. Board 1080 Ft. W. 1957 MLC

7. Photo Identification  
 Photo No. \_\_\_\_\_  
 Ident. By: \_\_\_\_\_

8. Plane Coordinate Position Data  
 State \_\_\_\_\_ Zone \_\_\_\_\_  
 X \_\_\_\_\_  
 Y \_\_\_\_\_  
 Estab. By \_\_\_\_\_  
 Field Book No. \_\_\_\_\_  
 Where Filed \_\_\_\_\_

9. Evaluation  
 Authentic X  
 Needs Verif. \_\_\_\_\_ Monument No  
 Re-estab. \_\_\_\_\_ Survey \_\_\_\_\_  
 Land Status F.S.

6. Signed D. Callahan Title \_\_\_\_\_ Date 8/23/51

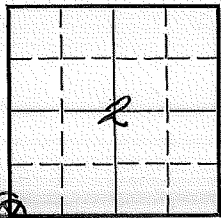
# LAND CORNER RECORD

E-17 5680-2

(Rectangular)

1. T 22S R 11E No E-17 Cor. Sec Mer. Wm. State Oregon N. F. Deschutes Dist. Fort Rock

2. Corner Status



7. Photo Identification

Photo No. \_\_\_\_\_  
Ident. By: \_\_\_\_\_

8. Plane Coordinate Position Data

State \_\_\_\_\_ Zone \_\_\_\_\_  
X \_\_\_\_\_  
Y \_\_\_\_\_  
Estab. By \_\_\_\_\_  
Field Book No. \_\_\_\_\_  
Where Filed \_\_\_\_\_

9. Evaluation

Authentic \_\_\_\_\_  
Needs Verif. \_\_\_\_\_ Monument No \_\_\_\_\_  
Re-estab.  Survey \_\_\_\_\_  
Land Status F.S. \_\_\_\_\_

3. Original Description \_\_\_\_\_ Vol. \_\_\_\_\_ Page \_\_\_\_\_ Where Recorded \_\_\_\_\_

4. Description of Corners:

5. Investigation Notes:

B.T. 20" W.F. marking grown over  
B.T. 20" P.P. marking grown over  
B.T. 24" P.P. log Marking burned

6. Signed D. Callahan Title \_\_\_\_\_ Date 8/18/61

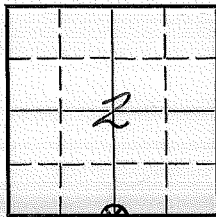
LAND CORNER RECORD

(Rectangular)

E-19 5680-2

1. T22S R11E NoE-19 Cor.  $\frac{7}{4}$  Mer. Wn. State Oregon N. F. Deschutes Dist. Fort Rock

2. Corner Status



7. Photo Identification

Photo No. \_\_\_\_\_

Ident. By: \_\_\_\_\_

8. Plane Coordinate Position Data

State \_\_\_\_\_ Zone \_\_\_\_\_

X \_\_\_\_\_

Y \_\_\_\_\_

Estab. By \_\_\_\_\_

Field Book No. \_\_\_\_\_

Where Filed \_\_\_\_\_

9. Evaluation

Authentic \_\_\_\_\_

Needs Verif. \_\_\_\_\_ Monument No \_\_\_\_\_

Re-estab.  Survey \_\_\_\_\_

Land Status F.S. \_\_\_\_\_

3. Original Description \_\_\_\_\_ Vol. \_\_\_\_\_ Page \_\_\_\_\_ Where Recorded \_\_\_\_\_

4. Description of Corners:

5. Investigation Notes:

2 24" P.P. B.T.s with grown over markings

6. Signed D. Callahan Title \_\_\_\_\_

Date 8/17/61

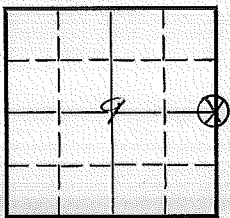
LAND CORNER RECORD

G-13 5680-2

(Rectangular)

1. T. 22S R. 14E No. G-13 Cor. 1/4 Mer. Will State Oregon N. F. Deschutes Dist. Fort Rock.

2. Corner Status



3. Original Description Vol. Page Where Recorded

4. Description of Corners: Stake set in Place  
BT = 5/4 PP - 23" Dia Bearing S65°W Dis - 35.9

5. Investigation Notes: Metal Fasten on SW side of PP 22" Dia. bearing  
of S23°W - Dis. 6.5' to corner

7. Photo Identification

Photo No. \_\_\_\_\_

Ident. By: \_\_\_\_\_

8. Plane Coordinate Position Data

State \_\_\_\_\_ Zone \_\_\_\_\_

X \_\_\_\_\_

Y \_\_\_\_\_

Estab. By \_\_\_\_\_

Field Book No. \_\_\_\_\_

Where Filed \_\_\_\_\_

9. Evaluation

Authentic \_\_\_\_\_

Needs Verif. \_\_\_\_\_ Monument No

Re-estab.  Survey \_\_\_\_\_

Land Status F.L.

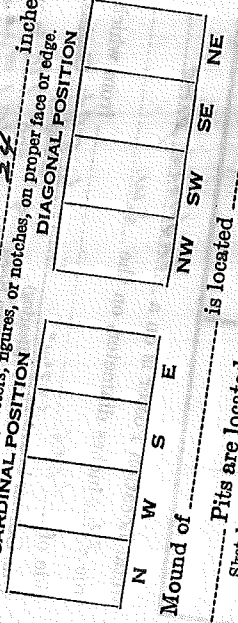
6. Signed G.M. Beil Title Forester Date April 21-1953

24

Aschbates  
CORNERS OF THE PUBLIC SURVEY  
T. 23 S R. 14 E Willmore Mer.

1/4 Corner common to Sections 9, and 10  
State condition Assumed (not) in place

Dimensions above ground  
Sketch grooves, letters, figures, or notches, on proper face or edge.  
CARDINAL POSITION 24 inches  
DIAGONAL POSITION



Pits are located \_\_\_\_\_  
Sketch markings of Bearing Trees (or Rocks) in proper box and  
fill blanks below, giving bearings from Corner to Trees and  
Distances in Links.

<u>5 1/4</u>			
<u>BT</u>			
<u>PP</u>			

Species \_\_\_\_\_  
Diameter 2.70" \_\_\_\_\_  
Bearing 56.5° \_\_\_\_\_  
Distance 3.59' \_\_\_\_\_

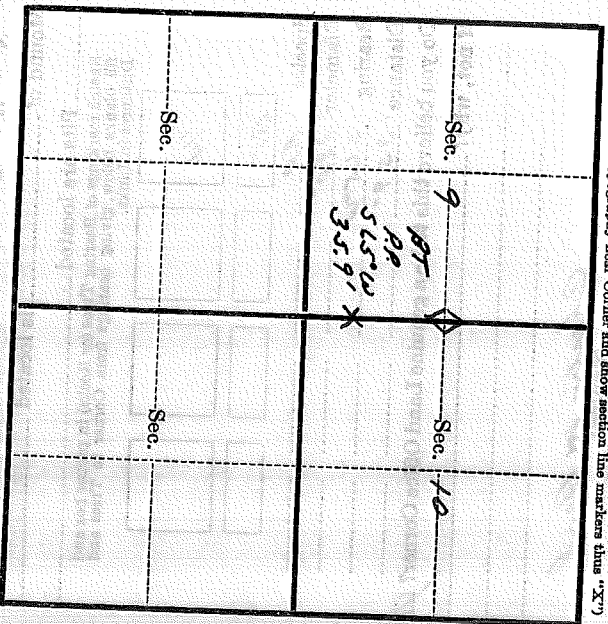
Do you believe this to be a genuine Land Office Corner? Yes  
If not, why? \_\_\_\_\_

Spack 21/1933 (Date)  
Chute m. Paul (Signature)

Forester (Title)  
16-12759



T. 22 S R. 14 E Willowville Mer.  
(Make sketch of topography near Corner and show section line markers thus "X")



Metal Location Poster is on a ponderosa pine  
tree 22.0 inches diameter, on the SW.

side of tree from which  
this Corner bears S23.2W° 6.54 Chains  
(Bearing) (Distance)

Section line marker between Secs. 9 and 10 is on  
a tree on the North side of road  
(Tree, post, etc.) (Name of road, trail, etc.)

located 23 chains North 1/4 S. from Section; 1/4 Cor.; Witness Cor.  
(Cross out nonapplicable)

Give any further facts needed to find Corner again:

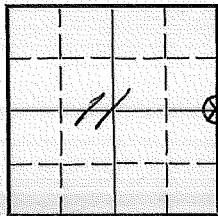
LAND CORNER RECORD

G-21 5680-2

(Rectangular)

1. T. 22S R. 11E No. G-21 Cor.  $\frac{1}{4}$  Mer. Wm. State Oregon N. F. Deschutes Dist. Fort Rock

2. Corner Status



3. Original Description \_\_\_\_\_ Vol. \_\_\_\_\_ Page \_\_\_\_\_ Where Recorded \_\_\_\_\_

4. Description of Corners:

5. Investigation Notes:

B.T. 20" P.P. marking  $\frac{1}{4}$ S  
 B.T. 20" P.P. marking  $\frac{1}{4}$ S 12

7. Photo Identification

Photo No. \_\_\_\_\_

Ident. By: \_\_\_\_\_

8. Plane Coordinate Position Data

State \_\_\_\_\_ Zone \_\_\_\_\_

X \_\_\_\_\_

Y \_\_\_\_\_

Estab. By \_\_\_\_\_

Field Book No. \_\_\_\_\_

Where Filed \_\_\_\_\_

9. Evaluation

Authentic  \_\_\_\_\_

Needs Verif. \_\_\_\_\_ Monument No \_\_\_\_\_

Re-estab. \_\_\_\_\_ Survey \_\_\_\_\_

Land Status F.S. \_\_\_\_\_

6. Signed D. Callahan Title \_\_\_\_\_ Date 8/19/61

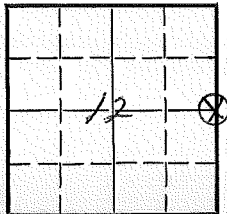
LAND CORNER RECORD

G-25 5680-2

(Rectangular)

1. T22S R14E No. G-25 Cor. 1/4 Mer Will State Oregon N. F. Deschutes Dist. Fort Rock

2. Corner Status



3. Original Description Vol. Page Where Recorded

4. Description of Corners: Stake not in Place  
 BT = 3/4 PP - 19.2" Dia Bearings N75°W - Dis. 10'4"  
 BT = 3/4 PP - 14" " " S20°E " 65'

5. Investigation Notes: Metal Post on North East side of LP 38" Dia  
 Bearings of N20E Dis. 18'4" to Corner  
 The 14" PP is burned off. about 3' of it remains  
 The 19.2 " is standing but leans about 15' Tall

7. Photo Identification

Photo No. \_\_\_\_\_  
 Ident. By: \_\_\_\_\_

8. Plane Coordinate Position Data

State \_\_\_\_\_ Zone \_\_\_\_\_  
 X \_\_\_\_\_  
 Y \_\_\_\_\_  
 Estab. By \_\_\_\_\_  
 Field Book No. \_\_\_\_\_  
 Where Filed \_\_\_\_\_

9. Evaluation

Authentic \_\_\_\_\_  
 Needs Verif. Monument No \_\_\_\_\_  
 Re-estab.  Survey \_\_\_\_\_  
 Land Status FL

6. Signed G. M. Beil Title Forester Date Oct. 10 - 1952

U. S. Department of Agriculture  
FOREST SERVICE

2-4

Reschutes NATIONAL FOREST  
CORNERS OF THE PUBLIC SURVEY

T. 22S R. 14E Williams Mer.

1/4 Section Corner common to Sections  
, and 12 (East side)

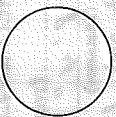
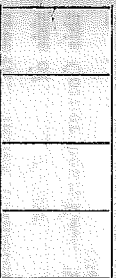
Corner consists of a stake (not) in place

State condition Assumed

Dimensions above ground \_\_\_\_\_ inches.  
Sketch grooves, letters, figures, or notches, on proper face or edge.

STONE CORNERS

METAL CORNERS



Mound of \_\_\_\_\_ is located \_\_\_\_\_

Pits are located \_\_\_\_\_

Sketch markings of Bearing Trees (or Rocks) in proper box  
and fill blanks below, giving bearings from Corner to Trees  
and Distances in Links.

$5\frac{1}{4}$	$5\frac{1}{4}$		
<u>13T</u>	<u>13T</u>		

Species PR PR

Diameter 1.92" 1.40"

Bearing N 75° W S 20° E

Distance 10.4" 6.50"

Do you believe this to be a genuine Land Office Corner? Yes  
If not, why? \_\_\_\_\_

Carl M. Paul

(Signature)

Oct 19, 1952

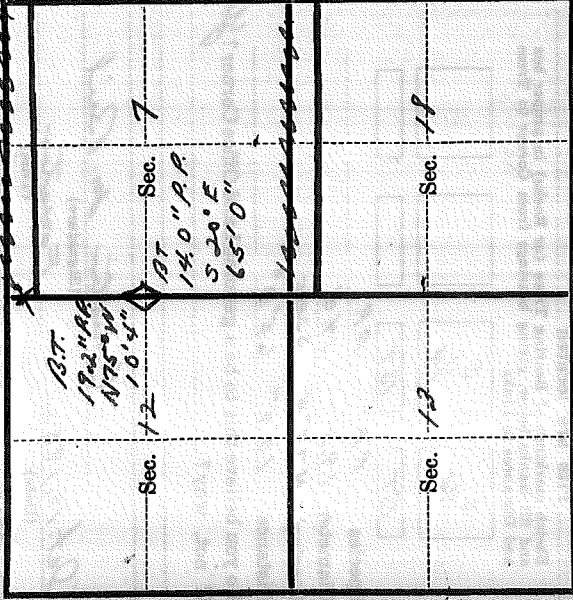
(Date)

Foster

(Title)

T. 22 S. R. 14 E. N Mer.

(Make sketch of topography near Corner and show section line markers thus "X")



Metal Location Poster is on a lodgepole pine  
 tree 38 inches diameter, on the North-east  
 side of tree from which  
 this Corner bears 22° E, 18' 4" 63 fms.

(Bearing) (Distance)

Section line marker between Secs. 12 and 6 is on

a tree on the \_\_\_\_\_ (Name of road, trail, etc.)

located 39 \_\_\_\_\_ chains 27 N. X. from Section; 1/4 Cor.; 1/4 Cor.

(Cross out nonapplicable)

Give any further facts needed to find Corner again:

The 14 inch ponderosa pine is burned  
off and only about 3 ft of it remains.  
The 17.2" pop. tree is dead and standing,  
about 15 ft tall.

Index File No. \_\_\_\_\_  
 CORNER RECORD (SEARCH) (Ref. FSM 7151.4) Tract or Survey No. \_\_\_\_\_ Cor. No. J-01  
22 S. R. 14 E. R.D. FT. ROCK County \_\_\_\_\_ See Coy  
 Merid. WILLAMETTE N.F. DESCHUTES State OREGON

SEE: J-25  
 T22S R13E

Loc. Tag 386' E. of Cor.

181

## Section Line Marker Record

2129~~B~~B Weasel Butte Road or Trail Fort Rock District

Sec. Line between 8 & 17 T. 22 S. R. 14 E.

Sec. 1733 Cor. 1733 Ft. W  
¼ or Sec. feet N. S. E. or W.

Posted on S side R  
N. S. E. or W. R. or T.

Posted 7/9/57 By K.H.T.  
Date

(Approx. \_\_\_\_\_)

Cor. Found (Exact. X)

(Paced X)

Distance (Chained \_\_\_\_\_)

6	5	4	3	2	1
7	8	9	10	11	12
18	17	16	15	14	13
19	20	21	22	23	24
30	29	28	27	26	25
31	32	33	34	35	36

Indicate position of marker by  
red X

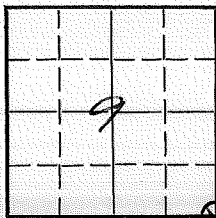
If marker is on Twp. or Rge. line, reference TWP. NORTH or Rge. EAST of that line.

## LAND CORNER RECORD

J-13 5680-2

1. T 22S R 11E No. J-13 Cor. Sec. Mer. Wm. State Oregon N. F. Deschutes Dist. Fort Rock

2. Corner Status



7. Photo Identification

Photo No. GS-VDOH

Ident. By: Sketch

8. Plane Coordinate Position Data

State \_\_\_\_\_ Zone \_\_\_\_\_

X \_\_\_\_\_

Y \_\_\_\_\_

Estab. By \_\_\_\_\_

Field Book No. \_\_\_\_\_

Where Filed \_\_\_\_\_

9. Evaluation

Authentic \_\_\_\_\_

Needs Verif. \_\_\_\_\_ Monument No. \_\_\_\_\_

Re-estab.  Survey \_\_\_\_\_

Land Status F.S. \_\_\_\_\_

3. Original Description \_\_\_\_\_ Vol. \_\_\_\_\_ Page \_\_\_\_\_ Where Recorded \_\_\_\_\_

4. Description of Corners:

5. Investigation Notes: Squared peg with no visible markings.

B.T. 2 6" L.P. metal tags showing location - one high stump with grown over blazes.

4 BT's stump standing for BT in sec. 10.  
all others down.

4 USFS. BT Tags

(Line 1 - Exposure 152)  
Filed: Menlo Park, Ca.

J.N. Tennant USGS  
5/77

Loc. Tag 650' E. of Cor.

6. Signed D. Callahan Title \_\_\_\_\_ Date 7/31/61

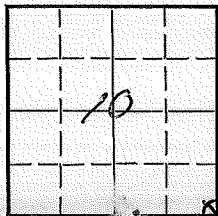


## LAND CORNER RECORD

J-17 5680-2

R 1. T 22S R 11E No. J-17 Cor. Sec Mer. Wm. State Oregon N. F. Deschutes Dist. Fort Rock

2. Corner Status



7. Photo Identification

Photo No. \_\_\_\_\_

Ident. By: \_\_\_\_\_

8. Plane Coordinate Position Data

State \_\_\_\_\_ Zone \_\_\_\_\_

X \_\_\_\_\_

Y \_\_\_\_\_

Estab. By \_\_\_\_\_

Field Book No. \_\_\_\_\_

Where Filed \_\_\_\_\_

9. Evaluation

Authentic \_\_\_\_\_

Needs Verif. \_\_\_\_\_ Monument No \_\_\_\_\_

Re-estab.  Survey \_\_\_\_\_

Land Status F.S. \_\_\_\_\_

3. Original Description \_\_\_\_\_ Vol. \_\_\_\_\_ Page \_\_\_\_\_ Where Recorded \_\_\_\_\_

4. Description of Corners:

5. Investigation Notes:

B.T. 24" pine - markings grown over,

B.T. 2-24" trees - marked 14, 15, 10, 11 T22S R11E 2

6. Signed D. Callahan Title \_\_\_\_\_

Date 8/1/61

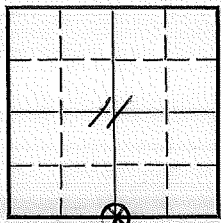
LAND CORNER RECORD

J-19 5680-2

(Rectangular)

1. T. 22S R. 11E No. J-19 Cor.  $\frac{1}{4}$  Mer. Wm. State Oregon N. F. Deschutes Dist. For. Rock

2. Corner Status



7. Photo Identification

Photo No. \_\_\_\_\_  
Ident. By: \_\_\_\_\_

8. Plane Coordinate Position Data

State \_\_\_\_\_ Zone \_\_\_\_\_  
X \_\_\_\_\_  
Y \_\_\_\_\_  
Estab. By \_\_\_\_\_  
Field Book No. \_\_\_\_\_  
Where Filed \_\_\_\_\_

9. Evaluation

Authentic  \_\_\_\_\_  
Needs Verif. \_\_\_\_\_ Monument No \_\_\_\_\_  
Re-estab. \_\_\_\_\_ Survey \_\_\_\_\_  
Land Status F.S. \_\_\_\_\_

3. Original Description \_\_\_\_\_ Vol. \_\_\_\_\_ Page \_\_\_\_\_ Where Recorded \_\_\_\_\_

4. Description of Corners:

5. Investigation Notes: Squared stake in ground with  $\frac{1}{4}$  corner markings

B.T. 18" pine - marked  $\frac{1}{4}$  S 14  
B.T. 12" pine log - marked  $\frac{1}{4}$  S 11

Loc. Tag 48 Ft. W.

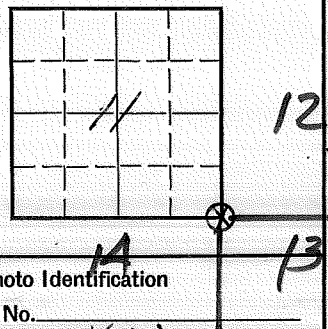
6. Signed D. Callahan Title \_\_\_\_\_ Date 8/3/61

LAND CORNER RECORD

J-21 5680-2

1. T 22S R 11E No. J-21 Cor. Sec Mer. Wm. State Oregon N. F. Deschutes Dist. Fort Rock

2. Corner Status



3. Original Description Vol. Page Where Recorded

4. Description of Corners:

5. Investigation Notes:

B.T. 18" pine snag - marked S 13  
B.T. 12" pine on ground - marked R 11E S 12

7. Photo Identification  
Photo No. \_\_\_\_\_  
Ident. By: Sketch

8. Plane Coordinate Position Data  
State \_\_\_\_\_ Zone \_\_\_\_\_  
X \_\_\_\_\_  
Y \_\_\_\_\_  
Estab. By \_\_\_\_\_  
Field Book No. \_\_\_\_\_  
Where Filed \_\_\_\_\_

N.E. BT Dead & down  
S.E. BT Dead & down

USFS BT Tag on each Tree

Sym & Data GS-VDOH Roll 1 Exposure 139  
Filed: Menlo Park, Ca. J.N. Tennant USGS  
Project Cartographer  
5/77

9. Evaluation  
Authentic \_\_\_\_\_  
Needs Verif. Monument No \_\_\_\_\_  
Re-estab. X Survey \_\_\_\_\_  
Land Status F.S. \_\_\_\_\_

6. Signed D. Callahan Title \_\_\_\_\_ Date 8/2/61

L-1.

### Section Line Marker Record

Fire Road 4E Road or Trail Fort Rock District

Sec. Line between 13 & 18 T. 22 S. R. 14 E.

1/4 Cor. 725 Ft. N  
1/4 or Sec. feet N. S. E. or W.

Posted on S side R  
N. S. E. or W. R. or T.

Posted 11/2/55 By C. Bigelow  
Date

(Approx. \_\_\_\_\_)

Cor. Found (Exact. X)

(Paced X)

Distance (Chained \_\_\_\_\_)

6	5	4	3	2	1
7	8	9	10	11	12
18	17	16	15	14	13
19	20	21	22	23	24
30	29	28	27	26	25
31	32	33	34	35	36

Indicate position of marker by red X

If marker is on Twp. or Rge. line, reference TWP. NORTH or Rge. EAST of that line.

### Section Line Marker Record

Fire Road #10 Road or Trail Fort Rock District

Sec. Line between 17 & 18 T. 22 S. R. 14 E.

*Also 700' S. of cor.*

1/4 Cor. 1390 Ft. S  
1/4 or Sec. feet N. S. E. or W.

Posted on S side R  
N. S. E. or W. R. or T.

Posted 6/12/57 By M.C.  
Date

(Approx. \_\_\_\_\_)

Cor. Found (Exact.  \_\_\_\_\_)

(Paced  \_\_\_\_\_)

Distance (Chained \_\_\_\_\_)

6	5	4	3	2	1
7	8	9	10	11	12
18	X 17	16	15	14	13
19	20	21	22	23	24
30	29	28	27	26	25
31	32	33	34	35	36

Indicate position of marker by red X

If marker is on Twp. or Rge. line, reference TWP. NORTH or Rge. EAST of that line.

## Section Line Marker Record

Weasel Butte #2129B Road or Trail Fort Rock District

Sec. Line between 16 & 17 T. 22 S. R. 14 E.

1/4 Cor. 660 Ft. N  
1/4 or Sec. feet N. S. E. or W.

Posted on N side R  
N. S. E. or W. R. or T.

Posted 10/17/55 By C. Bigelow  
Date

(Approx. \_\_\_\_\_)

Cor. Found (Exact. )

(Paced )

Distance (Chained \_\_\_\_\_)

6	5	4	3	2	1
7	8	9	10	11	12
18	17	16	15	14	13
19	20	21	22	23	24
30	29	28	27	26	25
31	32	33	34	35	36

Indicate position of marker by  
red X

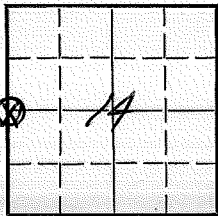
If marker is on Twp. or Rge. line, reference TWP. NORTH or Rge. EAST of that line.

LAND CORNER RECORD

L-17 5680-2

1. T. 22S R. 11E No. L-17 Cor.  $\frac{1}{4}$  Mer. Wm. State Oregon (Rectangular) N. F. Deschutes Dist. Fort Rock

2. Corner Status



3. Original Description \_\_\_\_\_ Vol. \_\_\_\_\_ Page \_\_\_\_\_ Where Recorded \_\_\_\_\_

4. Description of Corners:

5. Investigation Notes:

B.T. 24" pine - marked  $\frac{1}{4}$ S, Sec 14 ,

7. Photo Identification

Photo No. \_\_\_\_\_

Ident. By: \_\_\_\_\_

8. Plane Coordinate Position Data

State \_\_\_\_\_ Zone \_\_\_\_\_

X \_\_\_\_\_

Y \_\_\_\_\_

Estab. By \_\_\_\_\_

Field Book No. \_\_\_\_\_

Where Filed \_\_\_\_\_

9. Evaluation

Authentic \_\_\_\_\_

Needs Verif. X Monument No

Re-estab. \_\_\_\_\_ Survey \_\_\_\_\_

Land Status F.S.

6. Signed D. Callahan Title \_\_\_\_\_ Date 7/31/61

Index  
File No. \_\_\_\_\_  
T 22 S. R. 14 E. R.D. FT ROCK County \_\_\_\_\_  
Merid. WILLAMETTE N.F. DESCHUTES State OREGON

CORNER RECORD (SEARCH)  
(Ref. FSM 7151.4)

Tract or  
Survey No. \_\_\_\_\_

Cor.  
No. N-01  
See CV

SEE: N-25

T 22 S R 14 E  
R 13 E

1 BT



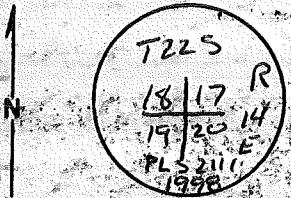
USDA-FOREST SERVICE

Index  
File No. \_\_\_\_\_  
T 22 R 14  
Merid. WM

CORNER RECORD (SEARCH)

Tract or Survey No. \_\_\_\_\_  
Cor. No. N-5  
R.O. Be 1/6 T Beck County Deschutes SE Cor  
N.F. \_\_\_\_\_ State OR S 18

CORNER DIAGRAM



DESCRIBE CORNER MONUMENT FOUND

SFNT

DESCRIBE BEARING TREES OR OTHER OFFICIAL ACCESSORIES FOUND

NW BT - a pine 31" dia w/ face scribing visible

PHOTO IDENTIFICATION DATA

Photo No. \_\_\_\_\_  
Filed At \_\_\_\_\_  
Object Ident. \_\_\_\_\_  
Ident. By \_\_\_\_\_  
*Signature*

PLANE COORDINATE POSITION DATA

State \_\_\_\_\_ Zone \_\_\_\_\_  
X \_\_\_\_\_  
Y \_\_\_\_\_  
Estab. By \_\_\_\_\_  
*Agency*

DESCRIBE CORNER LOCATION RELATIVE TO NEAR-BY FEATURES, ALSO HOW TO REACH CORNER

Signature *[Handwritten Signature]*

Title Tech

Division CS

Headquarters Beand/so

Date 9/16/98

**CORNER RECORD (PERPETUATION)**

**MONUMENT: DESCRIBE NEW MONUMENT SET, OR WORK DONE TO PRESERVE EXISTING MONUMENT**

Set - A 2 1/2" dia steel pipe surmounted by a 2 1/2" brass cap  
 rising 1'. Raised mound of stone around monument.  
 steel fence post 3' North

**ACCESSORIES: DESCRIBE NEW BT'S WITNESS OBJECTS ETC. ESTABLISHED, OR WORK DONE TO PRESERVE EXISTING EVIDENCE**

A.P.P. 15" dia N51°E 48.9' MKd T22S R14E S17 BT  
 " 5" " S15°E 41.0' " X BT  
 " 15" " S45°W 58.9' " T22 R14E S19 BT  
 " 31" " N23°W 46.2' original BT - not remarked

Work Done By WB Ham Title PLS Date \_\_\_\_\_ State Registration No. \_\_\_\_\_  
 or Agency \_\_\_\_\_

Certified Cor. Record Prepared?  Yes  No Filed At: \_\_\_\_\_ Date \_\_\_\_\_

**REMARKS**

Cor. falls approx 100' North of the junction of the  
 2238-100 and the 2239-320 Roads

Index File No. T. 22 R. 14 M. WM Tract or Surv. No. Cor. N-5

LAND CORNER RECORD

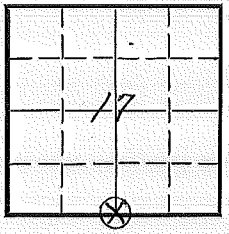
(Rectangular)

N-7

5680-2

1. T 22S R 14E No. 21-7 Cor. 114 Mer Will State Oregon N. F. Deschutes Dist. Trent Rock

2. Corner Status



3. Original Description \_\_\_\_\_ Vol. \_\_\_\_\_ Page \_\_\_\_\_ Where Recorded \_\_\_\_\_

4. Description of Corners: Stake not in place  
 BT = S 1/4 LP - 12" Dia. Bearing S 10° W - Dis - 29.9"  
 RT = S 1/4 PP - 35.3" .. .. N 30° W - .. 93.9"

5. Investigation Notes: Metal Paster on S.E. side of Tree 4" Dia  
Bearing S 33° E. Dis. 12' to Corner

7. Photo Identification  
 Photo No. \_\_\_\_\_  
 Ident. By: \_\_\_\_\_

8. Plane Coordinate Position Data  
 State \_\_\_\_\_ Zone \_\_\_\_\_  
 X \_\_\_\_\_  
 Y \_\_\_\_\_  
 Estab. By \_\_\_\_\_  
 Field Book No. \_\_\_\_\_  
 Where Filed \_\_\_\_\_

9. Evaluation  
 Authentic \_\_\_\_\_  
 Needs Verif. \_\_\_\_\_ Monument No  
 Re-estab.  Survey \_\_\_\_\_  
 Land Status F.S.

6. Signed E.M. Beil Title Forester Date Sept. 10 - 1952

# PERPETUATION RECORD

10. Monument:

11. Accessories

12. Set By \_\_\_\_\_ Title \_\_\_\_\_  
License \_\_\_\_\_ Agency \_\_\_\_\_ Date \_\_\_\_\_

13. Recorded By \_\_\_\_\_ Volume \_\_\_\_\_ Page \_\_\_\_\_  
(Agency)  
(Date) (City) (County) (State)

14. Remarks:

Field Book \_\_\_\_\_ Page \_\_\_\_\_

U. S. Department of Agriculture  
FOREST SERVICE

Reserves NATIONAL FOREST

CORNERS OF THE PUBLIC SURVEY

T. 22 S. R. 14 E Willamette Mer.

1/4 section Corner common to Sections

17, and 20

Corner consists of a stake (not) in place

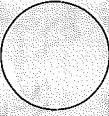
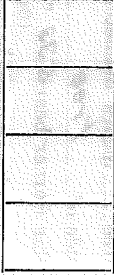
State condition Assumed

Dimensions above ground \_\_\_\_\_ inches.

Sketch grooves, letters, figures, or notches, on proper face or edge.

STONE CORNERS

METAL CORNERS



N W S E

Mound of \_\_\_\_\_ is located \_\_\_\_\_

Pits are located \_\_\_\_\_

Sketch markings of Bearing Trees (or Rocks) in proper box and fill blanks below, giving bearings from Corner to Trees and Distances in Links.

<u>S</u> <u>1/4</u>	<u>S</u> <u>1/4</u>	<u>S</u> <u>1/4</u>	<u>S</u> <u>1/4</u>
<u>B.T.</u>	<u>B.T.</u>	<u>B.T.</u>	<u>B.T.</u>

Species L.P.

Diameter 12"

Bearing S 10° W

Distance 29' 9"

35.3"

N 30° W

93' 9"

Do you believe this to be a genuine Land Office Corner? Yes  
If not, why? \_\_\_\_\_

Charles W. Reed

(Signature)

Forester

(Title)

Sept. 10, 1952

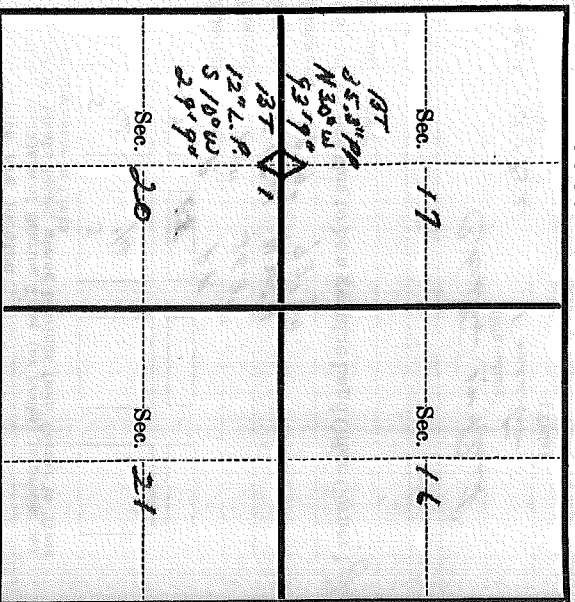
(Date)

Form 874-9

Rev. Mar. 1953

T. 225 R. 14E W Mer.

(Make sketch of topography near Corner and show section line markers thus "X".)



Metal Location Poster is on a Bondgrass pine tree 4 inches diameter, on the ~~west~~ southeast side of tree from which this Corner bears S 33° E 12.44 Chains (Bearing) (Distance) located 173 chains E, N, X, from ~~marker~~ 1/2 Wt.; ~~marker~~. (Cross out nonapplicable)

Section line marker between Secs. 15 and 22 is on a tree on the China Hill located 173 chains E, N, X, from ~~marker~~ 1/2 Wt.; ~~marker~~. (Name of road, trail, etc.)

Give any further facts needed to find Corner again:  
The 12" Lodgepole is dead + down

## Section Line Marker Record

Fire Road #2 Road or Trail Fort Rock District

Sec. Line between 20 & 21 T. 22 S. R. 14 E.

Sec. Cor. 660 Ft. N.  
 ¼ or Sec. feet N. S. E. or W.

Posted on W. side R.  
 N. S. E. or W. R. or T.

Posted 6/13/57 By M.L.C.  
 Date

(Approx. \_\_\_\_\_)

Cor. Found (Exact. )

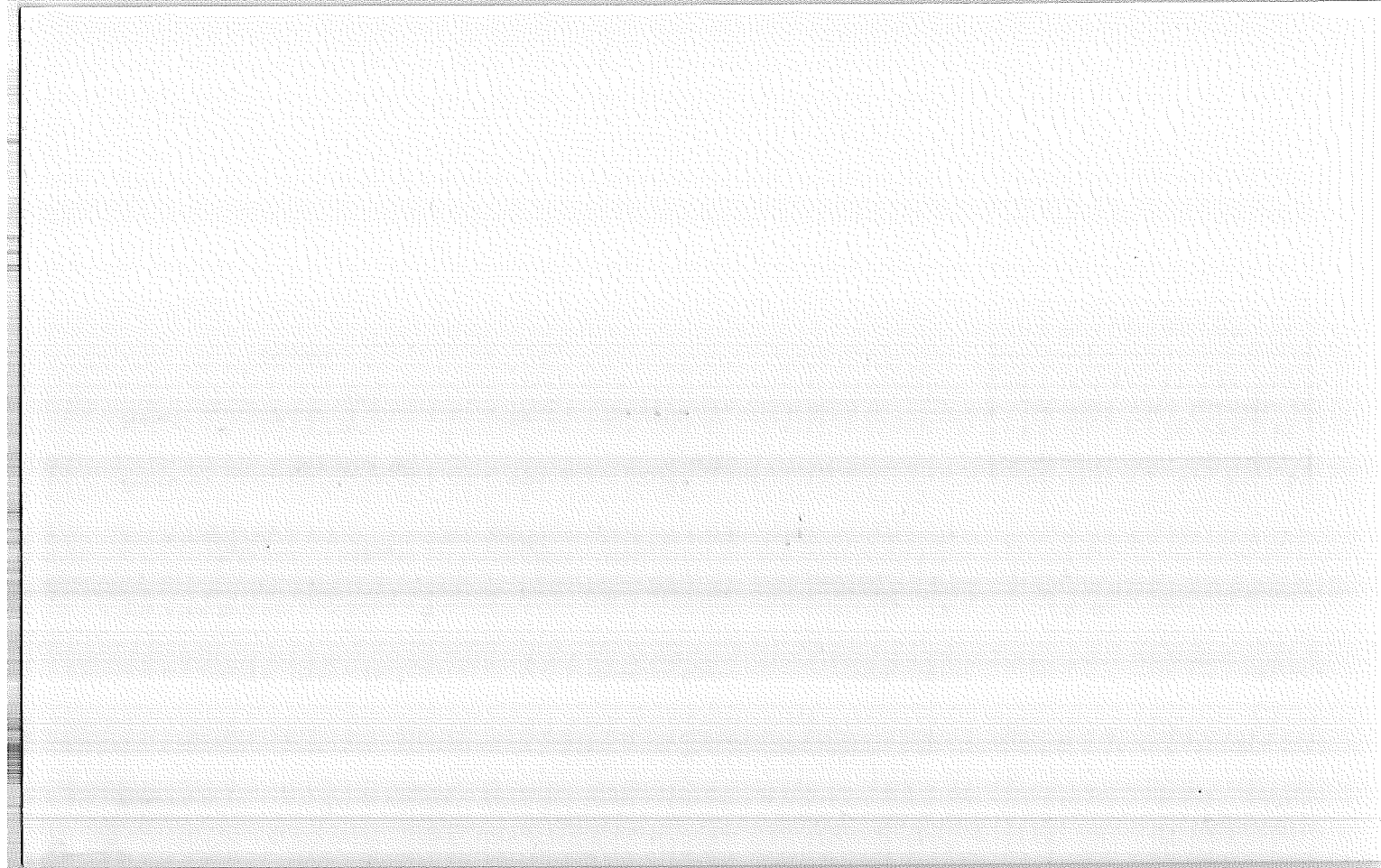
(Paced )

Distance (Chained \_\_\_\_\_)

6	5	4	3	2	1
7	8	9	10	11	12
18	17	16	15	14	13
19	20	21	22	23	24
30	29	28	27	26	25
31	32	33	34	35	36

Indicate position of marker by  
 red X

If marker is on Twp. or Rge. line, reference TWP. NORTH or Rge. EAST of that line.



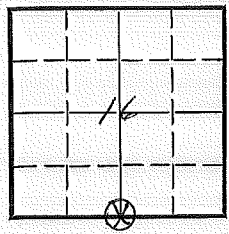


LAND CORNER RECORD

(Rectangular)

1. T. 22S R. 14E No. N-11 Cor. 14 Mer. Will State Oregon N. F. Deschutes Dist. Fort Rock

2. Corner Status



3. Original Description Vol. Page Where Recorded

4. Description of Corners: Stake not in place  
BT = 1/4 S LP 11" Dia Bearing S50E. Dis - 19'9"  
HT = 1/4 S. LP 13" " " N18°W " 36'6"

5. Investigation Notes: Metal Post on S.W. side of LP. 9" Dia.  
Bearing S31°W - Dis. 9' 4" To Corner.  
Both BTs dead & down. partly decayed  
  
Loc. Post on 1000 Ft. E. on W. side of Rd  
8155 G. Bigelow

7. Photo Identification

Photo No. \_\_\_\_\_

Ident. By: \_\_\_\_\_

8. Plane Coordinate Position Data

State \_\_\_\_\_ Zone \_\_\_\_\_

X \_\_\_\_\_

Y \_\_\_\_\_

Estab. By \_\_\_\_\_

Field Book No. \_\_\_\_\_

Where Filed \_\_\_\_\_

9. Evaluation

Authentic \_\_\_\_\_

Needs Verif. \_\_\_\_\_ Monument No

Re-estab.  Survey \_\_\_\_\_

Land Status Pat.

6. Signed G. M. Deil Title Forester Date Aug. 8 - 1952

# PERPETUATION RECORD

10. Monument:

11. Accessories

12. Set By \_\_\_\_\_ Title \_\_\_\_\_  
License \_\_\_\_\_ Agency \_\_\_\_\_ Date \_\_\_\_\_

13. Recorded By \_\_\_\_\_ Field Book \_\_\_\_\_ Page \_\_\_\_\_  
(Agency) Volume \_\_\_\_\_ Page \_\_\_\_\_  
(Date) (City) (County) (State)

14. Remarks:

U. S. Department of Agriculture  
FOREST SERVICE

*Deschutes* NATIONAL FOREST  
CORNERS OF THE PUBLIC SURVEY

T. 22 S. R. 14 E *Willamette* Mer.  
1/4 Section Corner common to Sections

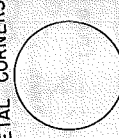
16, and 21  
Corner consists of a stake (not) in place

State condition Assumed inches.

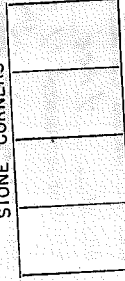
Dimensions above ground \_\_\_\_\_ inches.

Sketch grooves, letters, figures, or notches, on proper face or edge.

STONE CORNERS



METAL CORNERS



Mound of \_\_\_\_\_ is located \_\_\_\_\_

Pits are located \_\_\_\_\_

Sketch markings of Bearing Trees (or Rocks) in proper box and fill blanks below, giving bearings from Corner to Trees and Distances in Links.

<u>1/4</u> S	<u>1/4</u> S	<u>BT</u> L.P.	<u>BT</u> L.P.
-----------------	-----------------	-------------------	-------------------

Species L.P. L.P.

Diameter 1 1/2" 1 3/4"

Bearing S 5° E N 18° W

Distance 19.9" 36.6"

Do you believe this to be a genuine Land Office Corner? yes  
If not, why? \_\_\_\_\_

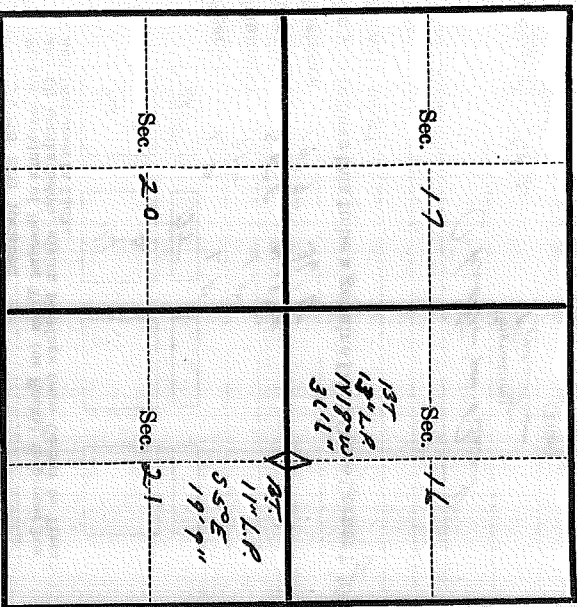
Charles W. Reed  
(Signature)

Forester  
(Title)

Aug 8, 1952  
(Date)

Form 874-9  
Rev. Mar. 1953

T. 22 S. R. 14 E. W. W Mer. Mer.  
(Make sketch of topography near Corner and show section line markers thru "X")



Metal Location Poster is on a lodgepole pine  
tree 9 inches diameter, on the southwest

side of tree from which  
this Corner bears S 31° W 1', 9' 40" Chains.  
(Bearing) (Distance)

Section line marker between Secs. 22 and 15 is on  
a tree on the China Hat Rd # 203  
(Tree, post, etc.) (Name of road, trail, etc.)  
located 93 chains Q from Section; 1/4 Cor.; 11888 feet  
(Cross out nonapplicable)

Give any further facts needed to find Corner again:  
All bearing trees are dead and down  
and partly decayed.

LAND CORNER RECORD

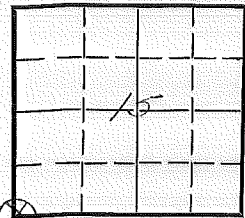
(Rectangular)

N-13

5680-2

1. T-22S R-14E No. X-13 Cor. Sec. Mer. Will. State Oregon N. F. Deschutes Dist. Fort Rock

2. Corner Status



3. Original Description Vol. Page Where Recorded

4. Description of Corners: BT- T 22S - R 14 E - Sec. 22 = PP - 23.5 Dia. Bearings 554°E Dis. 30'10" - BT- T 24 S R 14 E - S 16 = PP, 417 Dia. Bearings N 49°W Dis 34'10"

5. Investigation Notes: Metal Paster on PP - 23.5 Dia. on west side Bearings N 54°W - Dis 31' 10" to corner

7. Photo Identification

Photo No.

Ident. By:

8. Plane Coordinate Position Data

State Zone

X

Y

Estab. By

Field Book No.

Where Filed

9. Evaluation

Authentic

Needs Verif. Monument No

Re-estab. Survey

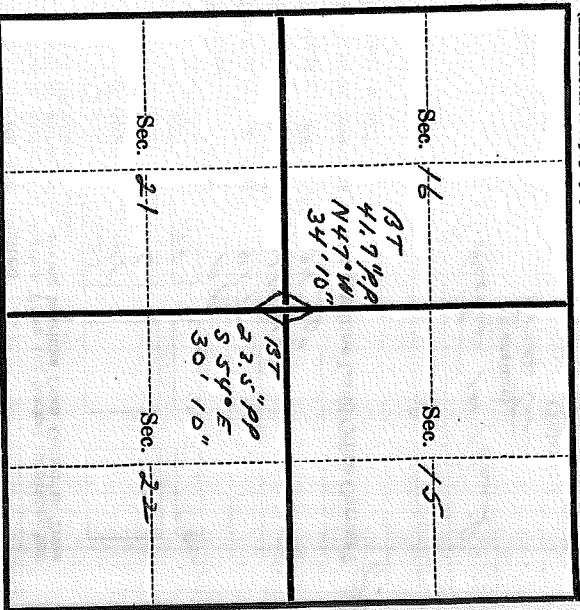
Land Status F.R.

6. Signed G.M. Beil Title Forester Date Aug. 25 - 1952

(Title)

(Date)

T. 22 S. R. 14 E. W. Mer.  
(Make sketch of topography near Corner and show section line markers thus "X")



Metal Location Poster is on a Ponderosa pine

tree 2.5 inches diameter, on the West side of tree from which

this Corner bears N 54° W 31.10" (Distance) Chains.

Section line marker between Secs. 15 and 22 is on

a tree on the China Hat Rd 203

located 57 chains 1/2 from Sec. 15; 1/2 from Sec. 22.

(Cross out nonapplicable)  
Give any further facts needed to find Corner again:

-----  
-----  
-----  
-----  
-----  
-----

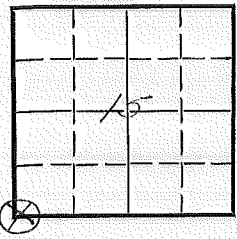
LAND CORNER RECORD  
(Rectangular)

N-13

5680-2

1. T 22S R 14E No. N-13 Cor. Sec. Mer. Will State Oregon N. F. Deschutes Dist. Fort Rock

2. Corner Status



3. Original Description Vol. Page Where Recorded

4. Description of Corners: BT- T 22S - R 14E - Sec. 22 = PP - 23.6 Dia. Bearing S 54° E Dis. 30' 10" -  
BT- T 24 S R 14 E - S 16 = PP. 417 Dia. Bearing N 49° W Dis 34' 10"

5. Investigation Notes: Metal Post on PP - 23.5 Dia. on west side  
Bearing N 54° W - Dis 31' 10" to corner

7. Photo Identification

Photo No. \_\_\_\_\_  
Ident. By: \_\_\_\_\_

8. Plane Coordinate Position Data

State \_\_\_\_\_ Zone \_\_\_\_\_  
X \_\_\_\_\_  
Y \_\_\_\_\_  
Estab. By \_\_\_\_\_  
Field Book No. \_\_\_\_\_  
Where Filed \_\_\_\_\_

9. Evaluation

Authentic \_\_\_\_\_  
Needs Verif. \_\_\_\_\_ Monument No  
Re-estab.  Survey  
Land Status F.B.

6. Signed G.M. Beil Title Forester Date Aug. 25 - 1952

# PERPETUATION RECORD

10. Monument:

11. Accessories

		Field Book	Page
12. Set By _____	Title _____	Recorded By _____	Volume _____
License _____	Agency _____	(Agency)	Page _____
Date _____		(Date) _____	(City) _____
		(County) _____	(State) _____

14. Remarks:



Index File No. N-13

CORNER RECORD (SEARCH)

(Ref. FSM 7151.4)

Tract or Survey No. \_\_\_\_\_ Cor. No. N-13

T 22S R. 14E

R.D. Fort Rock County Deschutes

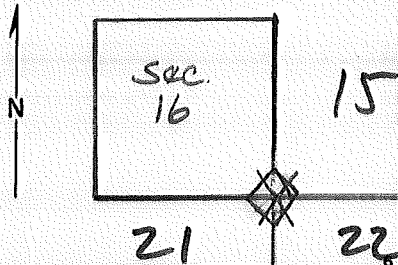
See Cor

Merid. Will

N.F. Deschutes State Ore.

CORNER DIAGRAM

DESCRIBE CORNER MONUMENT FOUND



DESCRIBE BEARING TREES OR OTHER OFFICIAL ACCESSORIES FOUND

N.E. BT. } USFS Tags  
 S.E. BT. } 16" Pine Tree Blazed on  
 N.W. BT. } 4 sides - Good Condition

PHOTO IDENTIFICATION DATA

Photo No. GS-VDOH

Filed At. Meno Park, Ca

Object Ident. Sec Cor Tree Pricker

Ident. By J.N. Tennant USGS

5/77 Signature 7

(Line 2 - Exposure 151)

DESCRIBE CORNER LOCATION RELATIVE TO NEAR-BY FEATURES, ALSO HOW TO REACH CORNER

Line marker 20' South

PLANE COORDINATE POSITION DATA

State \_\_\_\_\_ Zone \_\_\_\_\_

X \_\_\_\_\_

Y \_\_\_\_\_

Estab. By \_\_\_\_\_

Agency 8

Signature

Title

Division

Headquarters

Date

7100-52 (3/68)

CORNER RECORD (PERPETUATION)

MONUMENT : DESCRIBE NEW MONUMENT SET, OR WORK DONE TO PRESERVE EXISTING MONUMENT

9

ACCESSORIES : DESCRIBE NEW BT'S WITNESS OBJECTS ETC. ESTABLISHED, OR WORK DONE TO PRESERVE EXISTING EVIDENCE

10

Work Done By \_\_\_\_\_ Title \_\_\_\_\_ Date \_\_\_\_\_ State Registration No. or Agency \_\_\_\_\_

Certified Cor. Record Prepared ? Yes No Filed At: \_\_\_\_\_ Date \_\_\_\_\_

11

REMARKS

12

Index File No.

T.

R.

M.

Tract or Surv. No.

Cor. **N-13** 13

# LAND CORNER RECORD

(Rectangular)

N-15

5680-2

1. T. 22S R. 14E No. N-15 Cor. 14 Mer. Will State Oregon N. F. Deschutes Dist. Forest Rock

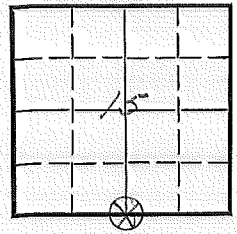
2. Corner Status

3. Original Description \_\_\_\_\_ Vol. \_\_\_\_\_ Page \_\_\_\_\_ Where Recorded \_\_\_\_\_

4. Description of Corners: BT = S 1/4 PP 34.7' Dir. Bearing N 30° E - Dis. 20'  
Corner of Rock, Pile of Rocks 12" Above Ground

5. Investigation Notes: Metal marker on SW side of P.P. 34.7' Dir  
Bearing of S 30° W Dis. 20' to Corner  
Loc. tag on N. side of Rd @ cor.

6. Signed G.M. Beil Title Forester Date Aug. 25 - 1953



7. Photo Identification  
Photo No. \_\_\_\_\_  
Ident. By: \_\_\_\_\_

8. Plane Coordinate Position Data  
State \_\_\_\_\_ Zone \_\_\_\_\_  
X \_\_\_\_\_  
Y \_\_\_\_\_  
Estab. By \_\_\_\_\_  
Field Book No. \_\_\_\_\_  
Where Filed \_\_\_\_\_

9. Evaluation  
Authentic   
Needs Verif. Monument No  
Re-estab. Survey  
Land Status Fd

# PERPETUATION RECORD

10. Monument:

11. Accessories

		Field Book _____	Page _____
12. Set By _____	Title _____	13. Recorded By _____	Volume _____
License _____	Agency _____	(Agency)	Page _____
Date _____		(Date) _____	(City) _____
		(County) _____	(State) _____

14. Remarks:

U. S. Department of Agriculture  
FOREST SERVICE

*Deschutes* NATIONAL FOREST

CORNERS OF THE PUBLIC SURVEY

T. *225* R. *14 E* *Williamette* Mer.

*1/4* section Corner common to Sections

....., *15*, and *22*

Corner consists of a *Rock* (~~not~~) in place

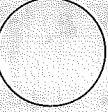
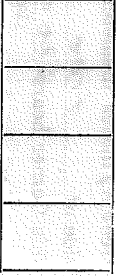
State condition *Pile of rock*

Dimensions above ground *12* inches.

Sketch grooves, letters, figures, or notches, on proper face or edge.

STONE CORNERS

METAL CORNERS



N W S E

Mound of ..... is located

..... Pits are located

Sketch markings of Bearing Trees (or Rocks) in proper box and fill blanks below, giving bearings from Corner to Trees and Distances in Links.

<i>5 1/4</i>			
<i>BT</i>	<i>PP</i>		

Species

Diameter *34.7"*

Bearing *N. 30° E*

Distance *20'*

Do you believe this to be a genuine Land Office Corner? *Yes*  
If not, why?

*Clayton M. Baill*

(Signature)

*Aug 25 1953*

(Date)

*Forester*

(Title)

Form 874-9

Rev. Mar. 1953

PERPETUATION RECORD

10. Monument:

11. Accessories

12. Set By \_\_\_\_\_ Title \_\_\_\_\_  
 License \_\_\_\_\_ Agency \_\_\_\_\_ Date \_\_\_\_\_

13. Recorded By \_\_\_\_\_ Volume \_\_\_\_\_ Page \_\_\_\_\_  
 (Agency) \_\_\_\_\_  
 (Date) \_\_\_\_\_ (City) \_\_\_\_\_ (County) \_\_\_\_\_ (State) \_\_\_\_\_

14. Remarks:

U. S. Department of Agriculture  
FOREST SERVICE

0-4

Reserves NATIONAL FOREST

## CORNERS OF THE PUBLIC SURVEY

T. 22 S. R. 14 E Williams Mer.Section 1 Corner common to Sections14, 15, 22, and 23Corner consists of a Stake (not) in placeState condition Assumed

Dimensions above ground \_\_\_\_\_ inches

Sketch grooves, letters, figures, or notches, on proper face or edge.

CARDINAL POSITION

DIAGONAL POSITION


N W S E NW SW SE NE

Mound of \_\_\_\_\_ is located \_\_\_\_\_

Pits are located \_\_\_\_\_

Sketch markings of Bearing Trees (or Rocks) in proper box and all blanks below, giving bearings from Corner to Trees and Distances in Links.

<u>SW</u>	<u>14</u>	<u>15</u>	
	<u>BT</u>		

Species L.P. L.P. L.P.Diameter 1.8" 2.0" 1.6"Bearing S46°E N134°W N43°WDistance 54'6" 48'6" 31'10"Do you believe this to be a genuine Land Office Corner? Yes

If not, why? \_\_\_\_\_

Chester M. Baird

(Signature)

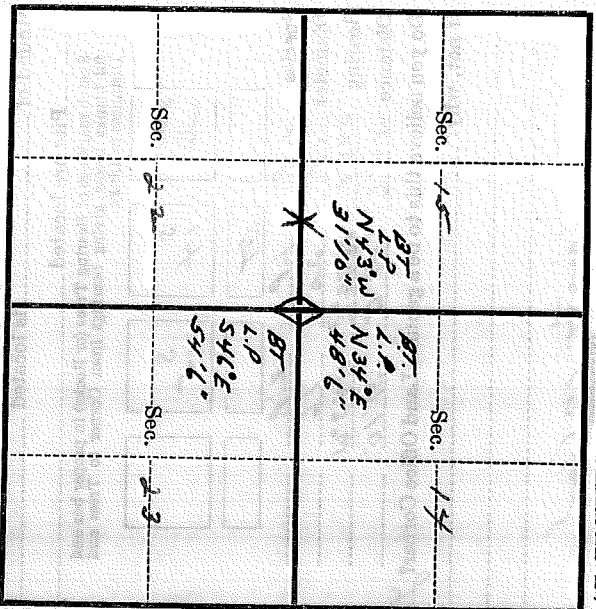
Sept. 16, 1932

(Date)

Forester

(Title)

(Make sketch of topography near Corner and show section line markers thus "X")



Metal Location Poster is on a *large pale pine*

tree *5* inches diameter, on the *west*

side of *Tree* from which

this Corner bears *S64°W* *161.2'* *Chains*.

(Bearing) (Distance)

Section line marker between Secs. *15* and *22* is on

a *Tree* on the *Chains Hot Bl. 203*

(Tree, post, etc.)

(Name of road, trail, etc.)

located *27* chains *N. W. 1/4* from Sec. *60*; *400*; *500*.

(Cross out nonapplicable)

Give any further facts needed to find Corner again:

*The marking on the 18 rail tree being*  
*546.5' from the corner is not a*  
*officially set the large pale*  
*parking post was set out*  
*all the way around and down.*



## Section Line Marker Record

Fire Road #2A Road or Trail Fort Rock District

Sec. Line between 20 & 21 T. 22 S. R. 14 E. \_\_\_\_\_

*Also 925' S. of cor.*

1/4 Cor. 400 Ft. S.  
1/4 or Sec. feet N. S. E. or W.

Posted on S. side R.  
N. S. E. or W. R. or T.

Posted 11/2/55 By Bigelow  
Date

(Approx. \_\_\_\_\_)

Cor. Found (Exact. X)

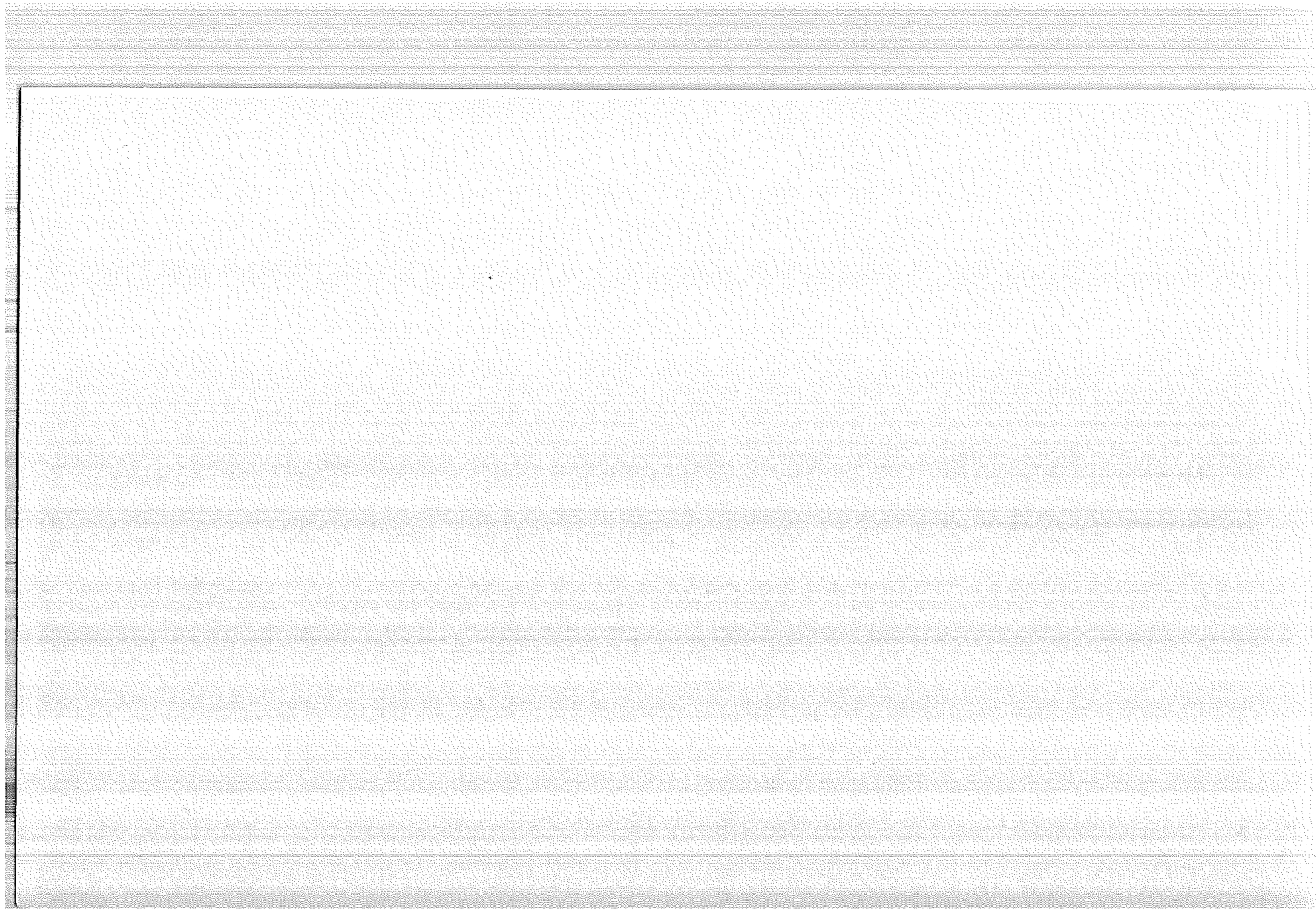
(Paced X)

Distance (Chained \_\_\_\_\_)

6	5	4	3	2	1
7	8	9	10	11	12
18	17	16	15	14	13
19	20	<u>X</u> 21	22	23	24
30	29	28	27	26	25
31	32	33	34	35	36

Indicate position of marker by  
red X

If marker is on Twp. or Rge. line, reference TWP. NORTH or Rge. EAST of that line.



Index

File No. \_\_\_\_\_

**CORNER RECORD (SEARCH)**

(Ref. FSM 7151.4)

Tract or

Survey No. \_\_\_\_\_

Cor.

No. P-17

T 22S R. 14E

R.D. Fort Rock

County Deschutes

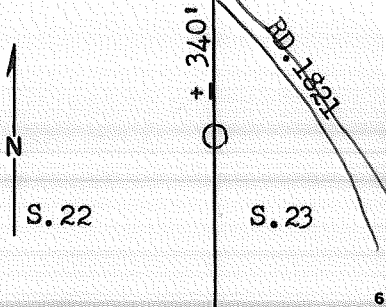
W/4 Cor. S.23

Merid. Willamette

N.F. Deschutes

State Oregon

**CORNER DIAGRAM**



**DESCRIBE CORNER MONUMENT FOUND**

**DESCRIBE BEARING TREES OR OTHER OFFICIAL ACCESSORIES FOUND**

SEARCHED  NOT FOUND

**PHOTO IDENTIFICATION DATA**

Photo No. \_\_\_\_\_

Filed At. \_\_\_\_\_

Object Ident. \_\_\_\_\_

Ident. By \_\_\_\_\_

*Signature*

**PLANE COORDINATE POSITION DATA**

State \_\_\_\_\_ Zone \_\_\_\_\_

X \_\_\_\_\_

Y \_\_\_\_\_

Estab. By \_\_\_\_\_

*Agency*

*Signature*

Title  
PLS

Division

Headquarters  
DNF-SO

Date  
20 AUG 1976

100-52 (3/68)

USDA-FOREST SERVICE

Index  
File No. \_\_\_\_\_  
T 22 R 14  
Merid. \_\_\_\_\_

CORNER RECORD (SEARCH)

(Ref. FSM 7151.4)

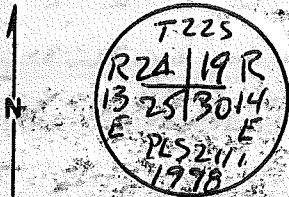
R.D. Bend/ET Rock County Deschutes  
N.F. Deschutes State OR

Tract or  
Survey No. \_\_\_\_\_

Cor.  
No. R-01

SE Cor  
S 24

CORNER DIAGRAM



DESCRIBE CORNER MONUMENT FOUND

Not Found

DESCRIBE BEARING TREES OR OTHER OFFICIAL ACCESSORIES FOUND

NE 13T - A pine 25" dia. w/ face 1/2 scribing exposed

PHOTO IDENTIFICATION DATA

Photo No. \_\_\_\_\_  
Filed At. \_\_\_\_\_  
Object Ident. \_\_\_\_\_  
Ident. By \_\_\_\_\_  
*Signature*

DESCRIBE CORNER LOCATION RELATIVE TO NEAR-BY FEATURES, ALSO HOW TO REACH CORNER

PLANE COORDINATE POSITION DATA

State \_\_\_\_\_ Zone \_\_\_\_\_  
X \_\_\_\_\_  
Y \_\_\_\_\_  
Estab. By \_\_\_\_\_  
*Agency*

Signature [Signature]

Title Tech.

Division CS

Headquarters Bend/SO

Date 9/17/98

FS-7100-52 (3/68)

**CORNER RECORD (PERPETUATION)**

**MONUMENT: DESCRIBE NEW MONUMENT SET, OR WORK DONE TO PRESERVE EXISTING MONUMENT**

Set a 2 1/2" dia x 30 long steel pipe surmounted by a 2 1/2" dia. Brass cap rising 4" in a ring of stone. A steel fence post 3' North

**ACCESSORIES : DESCRIBE NEW BT<sup>s</sup> WITNESS OBJECTS ETC. ESTABLISHED, OR WORK DONE TO PRESERVE EXISTING EVIDENCE**

A P.P. 25" dia N 56° E 49.5', (original BT - not re-marked)  
 A P.P. 19" " S 54° 3 69.3 marked T 22S R 14E S 30 BT  
 " " 7" " S 19° W 5.5' " X BT  
 " " 22" dia N. 07° W 44.8' " T 22S R 13E S 24 BT

A Location poster on road 2230-510 approx 70' West of Cor. 10

Work Done By WB Ham Title PIS Date \_\_\_\_\_ State Registration No. \_\_\_\_\_  
 or Agency \_\_\_\_\_

Certified Cor. Record Prepared?  Yes  No Filed At: \_\_\_\_\_ Date \_\_\_\_\_ 11

REMARKS

Index File No. T. 22 R. 14 M. Wm Tract or Surv. No. Cor. R-05 12

R-05

R-05 13

Index  
File No. \_\_\_\_\_ CORNER RECORD (SEARCH) (Ref. FSM 7151.4) Tract or Survey No. \_\_\_\_\_ Cor. No. R-01  
T 22 S. R. 14 E. R.D. FT ROCK County See CV  
Merid. WILLAMETTE N.F. DESCHUTES State OREGON

SEE: R-25

T 22S R13E

Loc. marker 2140' N  
& 1980' E & 200' N.  
& 200' S. of cor.

BT

R-01

## Section Line Marker Record

Fire Road #6 Road or Trail Fort Rock District

Sec. Line between 19 & 30 T. 22 S. R. 11 E.

1/4 Cor. 660 Ft. E.  
¼ or Sec. feet N. S. E. or W.

Posted on W side R  
N. S. E. or W. R. or T.

Posted 6/6/57 By M.L.C.  
Date

(Approx. \_\_\_\_\_)

Cor. Found (Exact. X)

(Paced X)

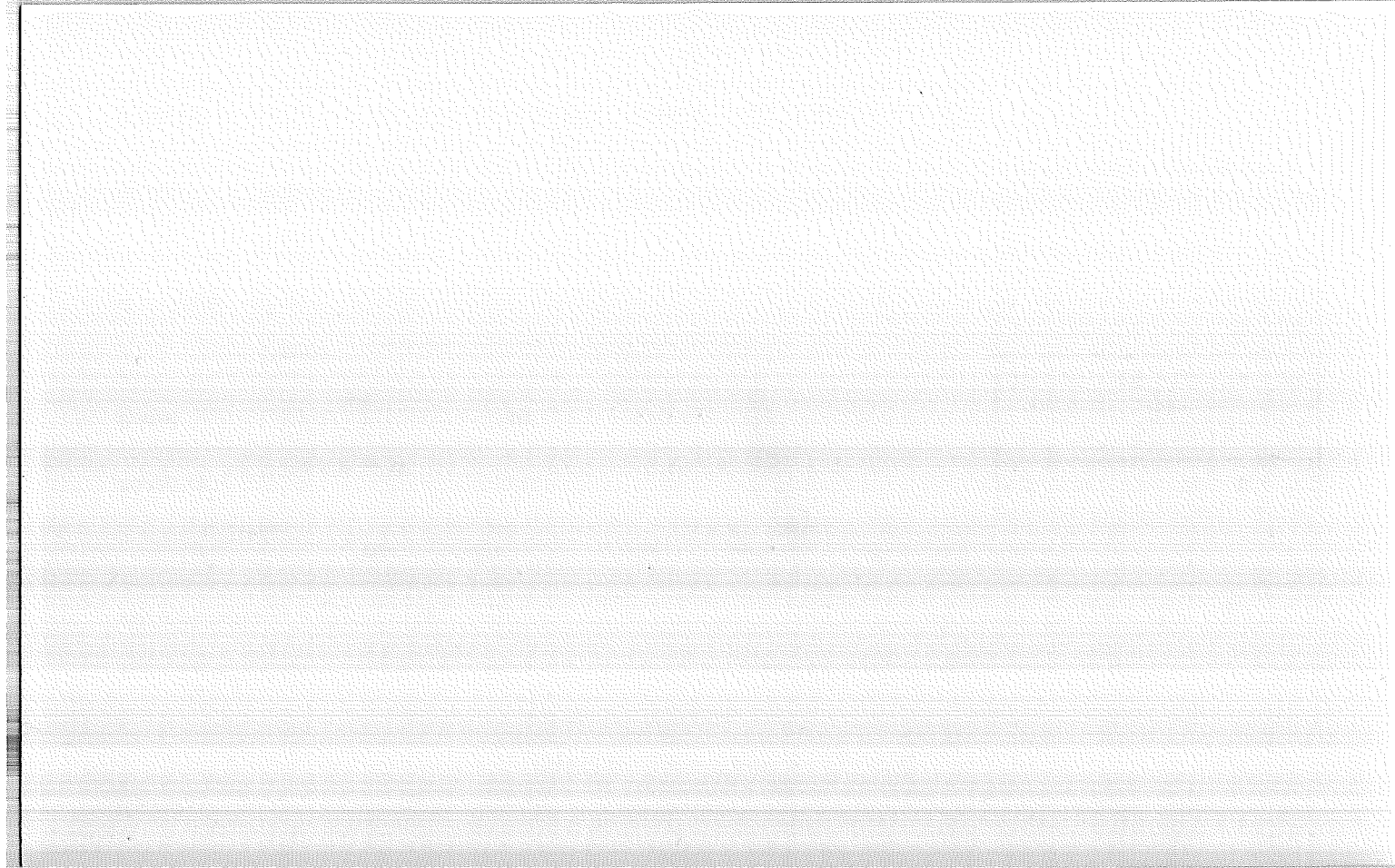
Distance (Chained \_\_\_\_\_)

6	5	4	3	2	1
7	8	9	10	11	12
18	17	16	15	14	13
19	20	21	22	23	24
X	29	28	27	26	25
30	29	28	27	26	25
31	32	33	34	35	36

Indicate position of marker by  
red X

If marker is on Twp. or Rge. line, reference TWP. NORTH or Rge. EAST of that line.



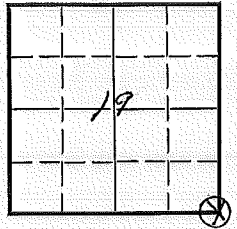


LAND CORNER RECORD

R-5

1. T 22S R 14E No. R-5 Cor. Sec Mer. Will State Oregon N. F. Deschutes Dist. Fort Rock

2. Corner Status



3. Original Description Vol. Page Where Recorded

4. Description of Corners: Stake (Corkinn) Down & Broken + 2 Rocks 7" above Ground.  
BT = T 22S - R 14E - S 20 LP - 12" Dia. Bearing N 68° E - Dis. 11.5'  
BT = Not Legible S 29 " 10.6 " " S 54° E " 36'  
BT = " " LP 10.4" Dia " S 2° W " 10'

5. Investigation Notes: Metal Pactor on south side of L.P. 8.2" Dia. bearing N. 20° E. Distance - 4' to Corner

7. Photo Identification

Photo No. \_\_\_\_\_  
Ident. By: \_\_\_\_\_

8. Plane Coordinate Position Data

State \_\_\_\_\_ Zone \_\_\_\_\_  
X \_\_\_\_\_  
Y \_\_\_\_\_  
Estab. By \_\_\_\_\_  
Field Book No. \_\_\_\_\_  
Where Filed \_\_\_\_\_

9. Evaluation

Authentic   
Needs Verif. Monument No  
Re-estab. Survey \_\_\_\_\_  
Land Status LS

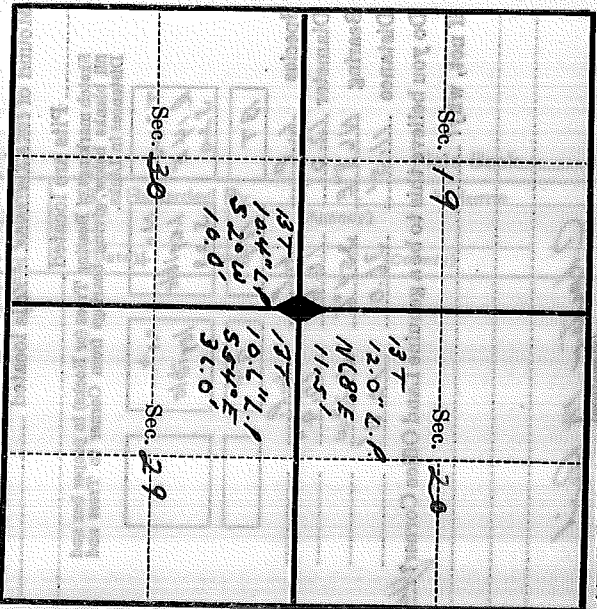
6. Signed C. M. Beil Title Forester Date Aug. 25 - 1952

PERPETUATION RECORD

10. Monument:

1. Accessories

T. 22 S R. 14 E Mer. 10  
 (Make sketch of topography near Corner and show section line markers thus "X")



Metal Location Poster is on a Kodapak pin  
 tree 8.2 inches diameter, on the south  
 side of tree from which  
 this Corner bears N20° E 4.0 ft. chains  
 (Bearing) (Distance)  
 Section line marker between Secs. 19 and 20 is on  
tree on the logging road  
 (Tree, post, etc.) (Name of road, trail, etc.)  
 located 129 chains W, S from Sec. 19; W, W  
 (Cross out nonapplicable)  
 Give any further facts needed to find Corner again:  
Some of scribbling on original stake  
is legible, but entire letter or number  
not readable.

R-5

### Section Line Marker Record

Fire Road # 11 Road or Trail Fort Rock District \_\_\_\_\_

Sec. Line between 20 & 29 T. 22 S. R. 11 E. \_\_\_\_\_

Sec. 725 Cor. W. Ft. W.  
1/4 or Sec. feet N. S. E. or W.

Posted on E. side R.  
N. S. E. or W. R. or T.

Posted 11/3/55 By C. Bigelow  
Date

(Approx. \_\_\_\_\_)

Cor. Found (Exact.  \_\_\_\_\_)

(Paced  \_\_\_\_\_)

Distance (Chained \_\_\_\_\_)

*Also 462' E. of cor*  
*11 265' N " 11*  
*11 1000' S " 11*

6	5	4	3	2	1
7	8	9	10	11	12
18	17	16	15	14	13
19	20	21	22	23	24
30	29	28	27	26	25
31	32	33	34	35	36

Indicate position of marker by red X

If marker is on Twp. or Rge. line, reference TWP. NORTH or Rge. EAST of that line.



LAND CORNER RECORD

(Rectangular)

R-7

5680-2

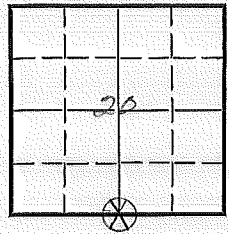
1. T. 22S R. 14E No. R-7 Cor. 14 Mer. Will State Oregon N. F. Deschutes Dist. Fort Rock

2. Corner Status

3. Original Description  Vol. \_\_\_\_\_ Page \_\_\_\_\_ Where Recorded \_\_\_\_\_

4. Description of Corners: Stake in ground with scribbles S 1/4 - 24" above ground  
BT = S 1/4 - PP - 28" Dia Benches S 30W Dis - 4'

5. Investigation Notes:



7. Photo Identification

Photo No. \_\_\_\_\_  
Ident. By: \_\_\_\_\_

8. Plane Coordinate Position Data

State \_\_\_\_\_ Zone \_\_\_\_\_  
X \_\_\_\_\_  
Y \_\_\_\_\_  
Estab. By \_\_\_\_\_  
Field Book No. \_\_\_\_\_  
Where Filed \_\_\_\_\_

9. Evaluation

Authentic   
Needs Verif. Monument No  
Re-estab. Survey  
Land Status F.S.

6. Signed G. M. Bail Title Forester Date Sept 11 - 1952

# PERPETUATION RECORD

10. Monument:

11. Accessories

12. Set By \_\_\_\_\_ Title \_\_\_\_\_  
License \_\_\_\_\_ Agency \_\_\_\_\_ Date \_\_\_\_\_

13. Recorded By \_\_\_\_\_ (Agency) \_\_\_\_\_  
Field Book \_\_\_\_\_ Page \_\_\_\_\_  
Volume \_\_\_\_\_ Page \_\_\_\_\_  
(Date) \_\_\_\_\_ (City) \_\_\_\_\_ (County) \_\_\_\_\_ (State) \_\_\_\_\_

14. Remarks:

U. S. Department of Agriculture  
FOREST SERVICE

*Descubates* NATIONAL FOREST

CORNERS OF THE PUBLIC SURVEY

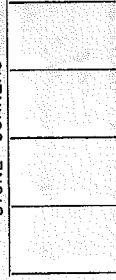
T. 22 S. R. 14 E. Wilbernetic Mer.  
1/4 Section Corner common to Sections

\_\_\_\_\_, \_\_\_\_\_, \_\_\_\_\_, and \_\_\_\_\_

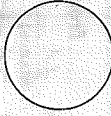
Corner consists of a stake \_\_\_\_\_ (not) in place  
State condition Stake in ground with scribbing 5 1/4

Dimensions above ground \_\_\_\_\_ 2 1/4 inches.  
Sketch grooves, letters, figures, or notches, on proper face or edge.

STONE CORNERS



METAL CORNERS



Mound of \_\_\_\_\_ is located \_\_\_\_\_

Pits are located \_\_\_\_\_

Sketch markings of Bearing Trees (or Rocks) in proper box and fill blanks below, giving bearings from Corner to Trees and Distances in Links.

5  
1/4



137



Species P.P.

Diameter 2.8"

Bearing S 3° W

Distance 4' 0"

Do you believe this to be a genuine Land Office Corner? Yes  
If not, why? \_\_\_\_\_

Chas. M. Bail

(Signature)

Sept. 14, 1952

(Date)

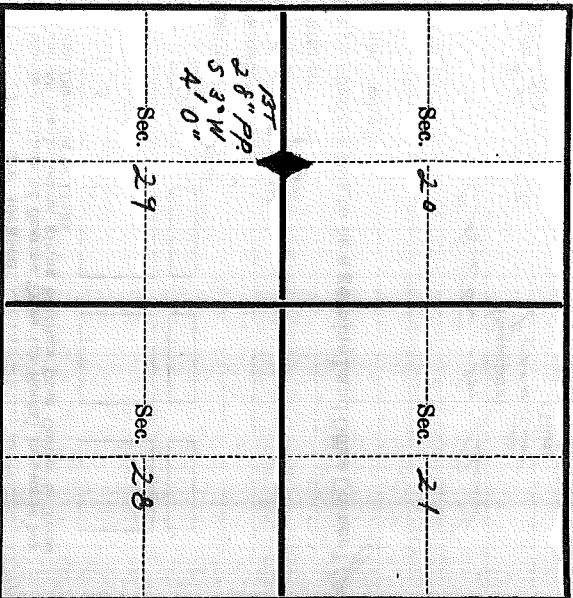
Forester

(Title)



T. 225 R. 14E W. Mer.

(Make sketch of topography near Corner and show section line markers thus "X")



Metal Location Poster is on a Ponderosa pine

tree 28 inches diameter, on the North

side of tree

this Corner bears N 3° E, 4 ft. from which

(Bearing)

(Distance)

Section line marker between Secs. 23 and 24 is on

a tree

(Tree, post, etc.)

on the China Hat Rd.

(Name of road, trail, etc.)

located 228 chains ~~E~~ from ~~Section~~ 1/2 (or: W 1/2 Sec.

(Cross out nonapplicable)

Give any further facts needed to find Corner again:

-----  
-----  
-----  
-----  
-----  
-----  
-----

Index  
 File No. R-9  
 T 22S R. 14E  
 Merid. Will

**CORNER RECORD (SEARCH)**

(Ref. FSM 7151.4)

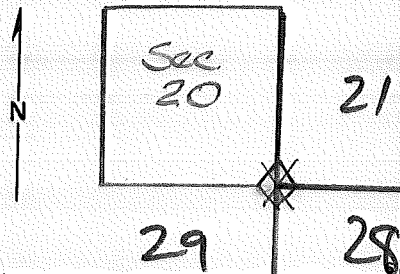
R.D. Fort Rock County Deschutes  
 N.F. Deschutes State Ore.

Tract or  
 Survey No. \_\_\_\_\_

Cor.  
 No. R-9

See cv

**CORNER DIAGRAM**



**DESCRIBE CORNER MONUMENT FOUND**

Mound of Stone - No markings

**DESCRIBE BEARING TREES OR OTHER OFFICIAL ACCESSORIES FOUND**

SW. BT. }  
 NE. BT. } USFS BT Tags

**PHOTO IDENTIFICATION DATA**

Photo No. GS-VDOH  
 Filed At. Menlo Park, Ca.  
 Object Ident. Md. of Stone Ident.  
 Ident. By J.N. Tennant USFS  
5/77 Signature

(Line 2 - Exposure 151)

**DESCRIBE CORNER LOCATION RELATIVE TO NEAR-BY FEATURES, ALSO HOW TO REACH CORNER**

South of Ice Caves.  
 Line marker 90' N. of corner

**PLANE COORDINATE POSITION DATA**

State \_\_\_\_\_ Zone \_\_\_\_\_  
 X \_\_\_\_\_  
 Y \_\_\_\_\_  
 Etab. By \_\_\_\_\_  
 Agency

Signature

Title

Division

Headquarters

Date

7100-52 (3/68)

4

5

CORNER RECORD (PERPETUATION)

MONUMENT : DESCRIBE NEW MONUMENT SET, OR WORK DONE TO PRESERVE EXISTING MONUMENT

9

ACCESSORIES : DESCRIBE NEW BT'S WITNESS OBJECTS ETC. ESTABLISHED, OR WORK DONE TO PRESERVE EXISTING EVIDENCE

10

Work Done By \_\_\_\_\_ Title \_\_\_\_\_ Date \_\_\_\_\_ State Registration No. or Agency \_\_\_\_\_

Certified Cor. Record Prepared ? Yes No Filed At: \_\_\_\_\_ Date \_\_\_\_\_ 11

REMARKS

Index File No.

T.

R.

M.

Tract or Surv. No.

Cor.

R-09<sup>12</sup><sub>13</sub>

LAND CORNER RECORD

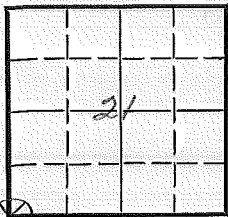
(Rectangular)

R-9

5680-2

1. T. 223 R. 14E No. R-13 Cor. Sec. Mer. Will State Oregon N. F. Deschutes Dist. Fort Rock

2. Corner Status



3. Original Description \_\_\_\_\_ Vol. \_\_\_\_\_ Page \_\_\_\_\_ Where Recorded \_\_\_\_\_

4. Description of Corners: Rock 8"x10"x12" - 4" above ground  
 BT= Not opened = LP-12" Dia. Bearing N5°W Dis. 27'  
 BF= S 28 - LP 18" .. .. S 18°W .. 36'  
 BT= T225-R14E LP 16" .. .. S 86°E .. 36'  
 BT= S-22 LP 14" .. .. N75°E .. 46'

5. Investigation Notes: Metal Paster on LP 12" Dia south side  
Bearing S5°E Dis. 27' to corner  
14" 16" + 18" LPs dead & down

7. Photo Identification

Photo No. \_\_\_\_\_  
 Ident. By: \_\_\_\_\_

8. Plane Coordinate Position Data

State \_\_\_\_\_ Zone \_\_\_\_\_  
 X \_\_\_\_\_  
 Y \_\_\_\_\_  
 Estab. By \_\_\_\_\_  
 Field Book No. \_\_\_\_\_  
 Where Filed \_\_\_\_\_

9. Evaluation

Authentic  \_\_\_\_\_  
 Needs Verif. Monument No \_\_\_\_\_  
 Re-estab. Survey \_\_\_\_\_  
 Land Status FS \_\_\_\_\_

6. Signed C.M. Beil Title Forester Date July 31 - 1952

# PERPETUATION RECORD

10. Monument:

11. Accessories

12. Set By \_\_\_\_\_ Title \_\_\_\_\_  
License \_\_\_\_\_ Agency \_\_\_\_\_ Date \_\_\_\_\_

13. Recorded By \_\_\_\_\_ (Agency) \_\_\_\_\_ Volume \_\_\_\_\_ Page \_\_\_\_\_  
(Date) (City) (County) (State)

14. Remarks:

**U. S. Department of Agriculture**  
FOREST SERVICE

Deschutes NATIONAL FOREST

**CORNERS OF THE PUBLIC SURVEY**

T. 22S R. 14E williamette Mer.

Section Corner common to Sections  
21, 22, 27, and 28

Corner consists of a Rock (~~post~~) in place

State condition 12" X 8" X 10"

Dimensions above ground 4 inches

Sketch grooves, letters, figures, or notches, on proper face or edge.

CARDINAL POSITION

DIAGONAL POSITION

N	W	S	E	NW	SW

Mound of \_\_\_\_\_ is located \_\_\_\_\_

Pits are located \_\_\_\_\_

Sketch markings of Bearing Trees (or Rocks) in proper box and fill blanks below, giving bearings from Corner to Trees and Distances in Links.

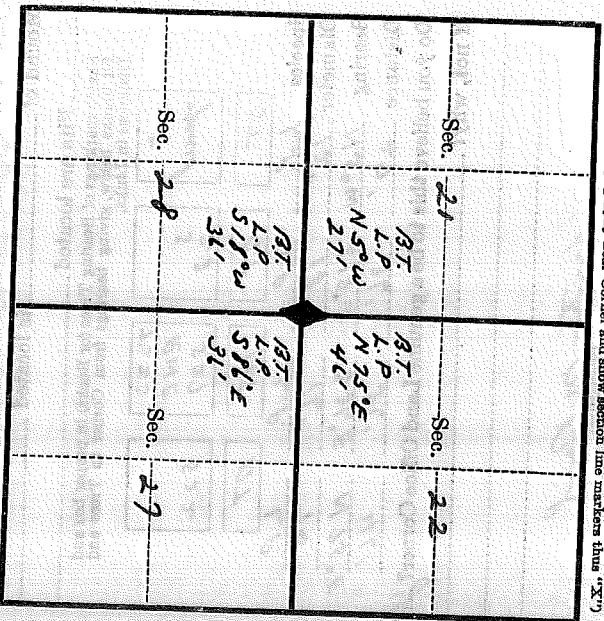
Species	<u>BT</u>	<u>S</u> <u>28</u>	<u>BT</u>	<u>BT</u>	<u>LP</u>
Diameter	<u>1.2"</u>	<u>1.8"</u>	<u>1.6"</u>	<u>1.4"</u>	<u>1.4"</u>
Bearing	<u>N 5° W</u>	<u>S 18° W</u>	<u>S 86° E</u>	<u>N 75° E</u>	<u>N 75° E</u>
Distance	<u>27'</u>	<u>36'</u>	<u>31'</u>	<u>46'</u>	<u>46'</u>

Do you believe this to be a genuine Land Office Corner? Yes  
If not, why? \_\_\_\_\_

Charles M. Bail  
(Signature)

July 31, 1952  
(Date)

Forester  
(Title)



Metal Location Poster is on a Lodgepole pine tree 12 inches diameter, on the South side of tree

this Corner bears S 5° E from which (Bearing) 270 ft (Distance)

Section line marker between Secs. 23 and 26 is on tree on the China Hat (Name of road, trail, etc.)

located 109 chains 1/4 from Sec. 04; 1/4 from 04. (Cross out nonapplicable)

Give any further facts needed to find Corner again: The 149 ch, 1/4 mi, and 1/4 mi legs pole pins are dead and almost

## LAND CORNER RECORD

(Rectangular)

R-11

5680-2

1. T. 22S R. 14E No. R-11 Cor. 1/4 Mer. Will State Oregon N. F. Daschutas Dist. Fort Rock

2. Corner Status

3. Original Description \_\_\_\_\_ Vol. \_\_\_\_\_ Page \_\_\_\_\_ Where Recorded \_\_\_\_\_

4. Description of Corners: Pile of Rocks 14" above ground  
BT = S 1/4 = PP = 38" Dia. Bearing S 10° W - Dis. 28'

5. Investigation Notes: Metal Dasher on North side of PP - 38" Dia  
Bearing N 70° E - Dis. 28' to Corner

7. Photo Identification  
 Photo No. \_\_\_\_\_  
 Ident. By: \_\_\_\_\_

8. Plane Coordinate Position Data  
 State \_\_\_\_\_ Zone \_\_\_\_\_  
 X \_\_\_\_\_  
 Y \_\_\_\_\_  
 Estab. By \_\_\_\_\_  
 Field Book No. \_\_\_\_\_  
 Where Filed \_\_\_\_\_

9. Evaluation  
 Authentic   
 Needs Verif. Monument No  
 Re-estab. Survey  
 Land Status F.S.

6. Signed G. M. Beil Title Forester Date July 31 - 1952



# PERPETUATION RECORD

10. Monument:

11. Accessories

12. Set By \_\_\_\_\_ Title \_\_\_\_\_  
License \_\_\_\_\_ Agency \_\_\_\_\_ Date \_\_\_\_\_

13. Recorded By \_\_\_\_\_ (Agency) \_\_\_\_\_ Volume \_\_\_\_\_ Page \_\_\_\_\_  
(Date) (City) (County) (State)

14. Remarks:

U. S. Department of Agriculture  
FOREST SERVICE

p. 4

Reschate, NATIONAL FOREST  
CORNERS OF THE PUBLIC SURVEY

T. 22 S. R. 14 E. Williams Co. Mer.

1/4 Corner common to Sections  
21, and 28Corner consists of a pile of rocks (not in place)  
State condition Rocks piled togetherDimensions above ground 17 inches  
Sketch grooves, letters, figures, or notches, on proper face of edge.

CARDINAL POSITION

N	W	S	E
	NW	SW	SE
			NE

DIAGONAL POSITION

Mound of \_\_\_\_\_ is located \_\_\_\_\_

Pits are located \_\_\_\_\_

Sketch markings of Bearing Trees (or Rocks) in proper box and  
fill blanks below, giving bearings from Corner to Trees and  
Distances in links.

S			
1/4			
BT			

Species P. P.

Diameter 28"

Bearing S 10° W

Distance 28'

Do you believe this to be a genuine Land Office Corner? *Yes*

If not, why? \_\_\_\_\_

*Chester M. Peil*

(Signature)

*July 21, 1952*

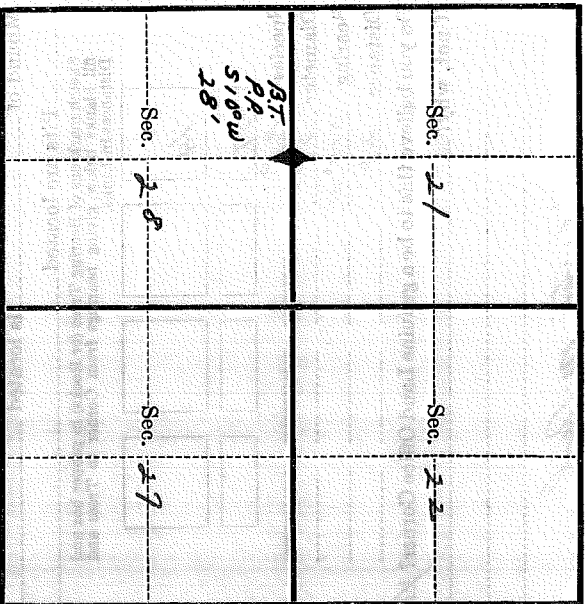
(Date)

*Forester*

(Title)

T. 228 R. 14E Wilmette Mer.

(Make sketch of topography near Corner and show section line markers thus "X")



Metal Location Poster is on a ponderosa pine tree 38 inches diameter, on the north

side of tree from which this Corner bears N10°E, 2844 chains  
(Bearing) (Distance)

Section line marker between Secs. 23 and 24 is on a tree on the Chin2 H&F Rd.  
(Tree, post, etc.) (Name of road, trail, etc.)

located 149 chains E from Section; 1/4 Cor.; Pinus for  
(Cross out nonapplicable)

Give any further facts needed to find Corner again:

## Section Line Marker Record

Cinder Cone FR #23 Road or ~~Track~~ Fort Rock District

Sec. Line between 22 & 27 T. 22 S. R. 14 E.

*Also 330' W. of cor*

1/4 Cor. 660 Ft. W  
1/4 or Sec. feet N. S. E. or W.

Posted on E side Road  
N. S. E. or W. R. or T.

Posted 11-22-57 By K.H.Tiller  
Date

(Approx. \_\_\_\_\_)

Cor. Found (Exact. X)

(Paced X)

Distance (Chained \_\_\_\_\_)

6	5	4	3	2	1
7	8	9	10	11	12
18	17	16	15	14	13
19	20	21	22	23	24
30	29	28	27	26	25
31	32	33	34	35	36

Indicate position of marker by  
red X

If marker is on Twp. or Rge. line, reference TWP. NORTH or Rge. EAST of that line.



## Section Line Marker Record

Cinder Cone #24

Road or ~~Rd.~~

Fort Rock

District

Sec. Line between 22 &amp; 27 T. 22 S. R. 14 E.

$\frac{1}{4}$  Cor. 813 Ft. E  
 $\frac{1}{4}$  or Sec. feet N. S. E. or W.

Posted on W side Rd.  
N. S. E. or W. R. or T.

Posted 11-21-57 By K.H.Tiller  
Date

(Approx. \_\_\_\_\_)

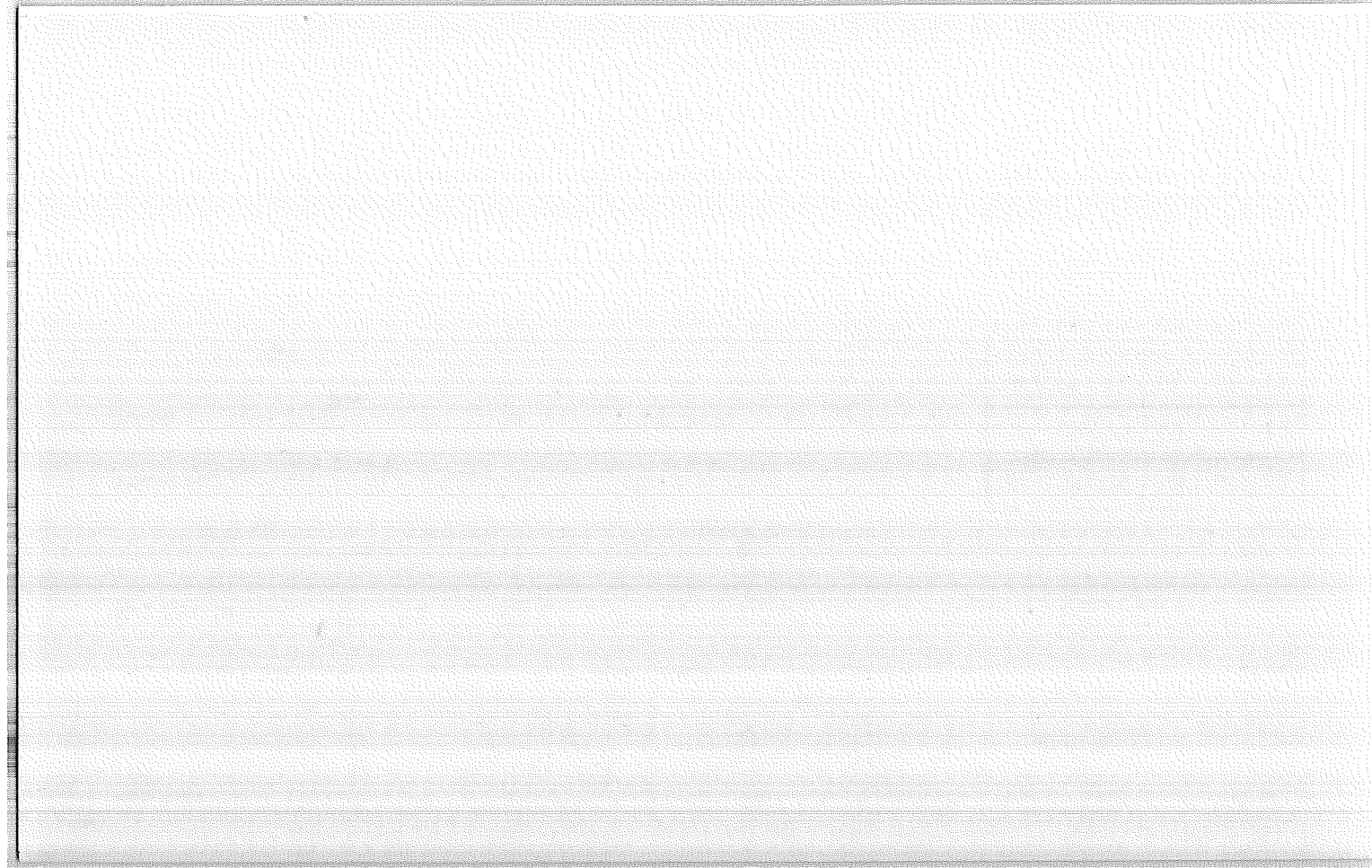
Cor. Found (Exact. )(Paced )

Distance (Chained \_\_\_\_\_)

6	5	4	3	2	1
7	8	9	10	11	12
18	17	16	15	14	13
19	20	21	22	23	24
30	29	28	27	26	25
31	32	33	34	35	36

Indicate position of marker by  
red X

If marker is on Twp. or Rge. line, reference TWP. NORTH or Rge. EAST of that line.



# LAND CORNER RECORD

(Rectangular)

R-19

5680-2

1. T. 22S R. 14E No. R-19 Cor. 1/4 Mer. Will. State Oregon N. F. Deschutes Dist. Tant Rock

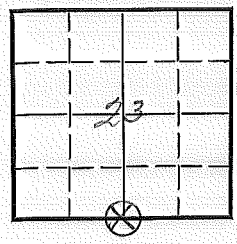
2. Corner Status

3. Original Description \_\_\_\_\_ Vol. \_\_\_\_\_ Page \_\_\_\_\_ Where Recorded \_\_\_\_\_

4. Description of Corners: A. Rock - 3 Rocks Piled in a group. 6" Above Ground  
BT. = 1/4 S L.P. 16" Dia. Bearing N 29° W. Dis. 15' 7"

5. Investigation Notes: Metal Paster on L.P. Pine 4" Dia. on west side  
Bearing S 21° W Dis. 3' 9" to Corner

6. Signed C.M. Beil Title Forester Date Aug. 20-1952



7. Photo Identification

Photo No. \_\_\_\_\_  
Ident. By: \_\_\_\_\_

8. Plane Coordinate Position Data

State \_\_\_\_\_ Zone \_\_\_\_\_  
X \_\_\_\_\_  
Y \_\_\_\_\_  
Estab. By \_\_\_\_\_  
Field Book No. \_\_\_\_\_  
Where Filed \_\_\_\_\_

9. Evaluation

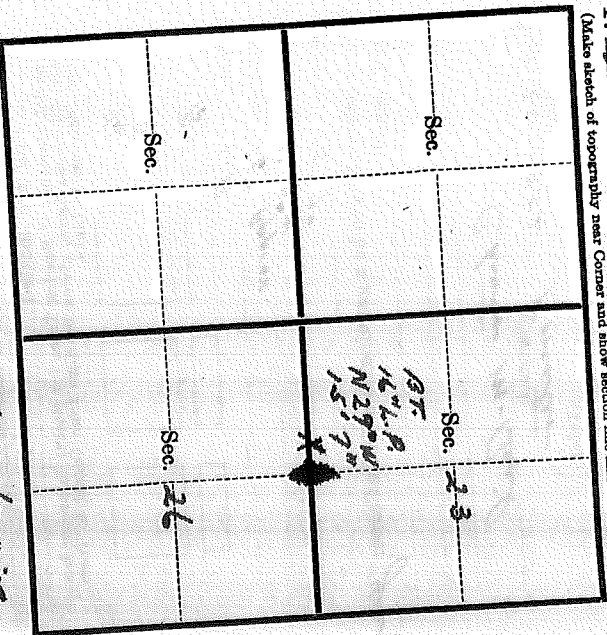
Authentic   
Needs Verif. Monument No  
Re-estab. Survey  
Land Status F.L.

Mound of \_\_\_\_\_ is located \_\_\_\_\_  
Pits are located \_\_\_\_\_  
N W S E



T. 225 R. 14E W Mer.

(Make sketch of topography near Corner and show section line markers thus "X")



Metal Location Poster is on a lodgepole pine

tree 4 inches diameter, on the west

side of tree from which

this Corner bears 521° W, 3' 7" Chains.

Section line marker between Secs. 23 and 26 is on

tree on the Came Hotel 223

located 10 chains X, W from ~~corner~~ Y (Var.; ~~distance~~ etc.)

(Gross out nonapplicable)

Give any further facts needed to find Corner again:

Lodgepole pine; is dead and down.

Sitting in on lower side of tree.

\_\_\_\_\_

\_\_\_\_\_

Index  
File No. \_\_\_\_\_

**CORNER RECORD (SEARCH)**

(Ref. FSM 7151.4)

Tract or  
Survey No. \_\_\_\_\_

Cor.  
No. R 21

T 22 S R. 14 E

R.D. Fort Rock County Deschutes

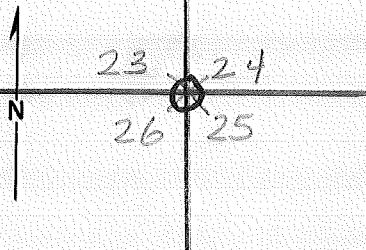
See Col

Merid. W. Hamette

N.F. Deschutes State Oregon

CORNER DIAGRAM

DESCRIBE CORNER MONUMENT FOUND



DESCRIBE BEARING TREES OR OTHER OFFICIAL ACCESSORIES FOUND

Found 3 bearing trees tagged with metal B+ tags. ALSO metal location poster.

NW&SW BTs by Tenant of USGS 5/77

GS-VDOH - Line 1, Exposure 139 Menlo Park, CA.

PHOTO IDENTIFICATION DATA

Photo No. 24-241

Filed At. Ft Rock

Object Ident. \_\_\_\_\_

Ident. By Youngs

*Signature*

DESCRIBE CORNER LOCATION RELATIVE TO NEAR-BY FEATURES, ALSO HOW TO REACH CORNER

corner is next to spur rd on NE side of Kelly butte

PLANE COORDINATE POSITION DATA

State \_\_\_\_\_ Zone \_\_\_\_\_

X \_\_\_\_\_

Y \_\_\_\_\_

Estab. By \_\_\_\_\_

*Agency*

Signature

Title

Division

Headquarters

Date

7100-52 (3/68)

9-1-71

CORNER RECORD (PERPETUATION)

MONUMENT : DESCRIBE NEW MONUMENT SET, OR WORK DONE TO PRESERVE EXISTING MONUMENT

None

9

ACCESSORIES : DESCRIBE NEW BT'S WITNESS OBJECTS ETC. ESTABLISHED, OR WORK DONE TO PRESERVE EXISTING EVIDENCE

10

Work Done By Youngs Title Forestry Aid Date 9-1-71 State Registration No. or Agency \_\_\_\_\_

Certified Cor. Record Prepared ? Yes  No  Filed At: \_\_\_\_\_ Date \_\_\_\_\_

11

REMARKS

12

Index File No.

T.

R.

M.

Tract or Surv. No.

Cor. R-21

13

## LAND CORNER RECORD

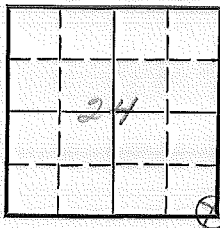
(Rectangular)

R-25

5680-2

1. T 22S R 14E No. R-25 Cor. Sec. Mer Will State Oregon N. F. Daschutes Dist. Fert Rock

## 2. Corner Status



3. Original Description \_\_\_\_\_ Vol. \_\_\_\_\_ Page \_\_\_\_\_ Where Recorded \_\_\_\_\_

4. Description of Corners: No actual corner found -  
 BT = R14E LP 16" Dia. Bearing N28°W Dis. 58'  
 BT = Not Visible = LP 20" Dia. Bearing N49°W Dis 45'  
 BT = " " LP 16" " " S55°E " 22'  
 BT S-25 = PP 32" Dia Bearing S45°W - Dis = 120'

5. Investigation Notes: 32" PP. Dam & Stairways  
see attached information: it seems doubtful for and corner  
in Sec 18 or 19 - T22S - R14E

## 7. Photo Identification

Photo No. \_\_\_\_\_

Ident. By: \_\_\_\_\_

## 8. Plane Coordinate Position Data

State \_\_\_\_\_ Zone \_\_\_\_\_

X \_\_\_\_\_

Y \_\_\_\_\_

Estab. By \_\_\_\_\_

Field Book No. \_\_\_\_\_

Where Filed \_\_\_\_\_

## 9. Evaluation

Authentic \_\_\_\_\_

Needs Verif. \_\_\_\_\_ Monument NoRe-estab.  Survey \_\_\_\_\_Land Status F.S.6. Signed C. M. Bail Title Forester Date Oct. 10 - 1952

PERPETUATION RECORD

10. Monument:

11. Accessories

		Field Book _____	Page _____
12. Set By _____	Title _____	13. Recorded By _____	Volume _____
License _____	Agency _____	(Agency)	Page _____
Date _____		(Date) _____	(City) _____
		(County) _____	(State) _____

14. Remarks:

**U. S. Department of Agriculture**  
FOREST SERVICE

Deschutes NATIONAL FOREST  
**CORNERS OF THE PUBLIC SURVEY**

T. 22S R. 7E Willamette Mer.Section Corner common to Sections24, 25, and 18Corner consists of a stake (not in place)State condition AssumedDimensions above ground 20 inches

Sketch grooves, letters, figures, or notches, on proper face or edge.

CARDINAL POSITION

DIAGONAL POSITION

N	W	S	E	NW	SW	SE	NE

Mound of \_\_\_\_\_ is located \_\_\_\_\_

Pits are located \_\_\_\_\_

Sketch markings of Bearing Trees (or Rocks) in proper box and fill blanks below, giving bearings from Corner to Trees and Distances in Links.

R 14E S 24	not visible	not visible	5 25
BT	BT	BT	19T

Species L.P. L.P. P.P.Diameter 1.6" 2.0" 1.6" 3.2"Bearing N 28° W N 47° E S 55° E S 85° WDistance 5.8' 4.5' 2.2' 1.20'Do you believe this to be a genuine Land Office Corner? Yes

If not, why? \_\_\_\_\_

Chas. M. Bail

(Signature)

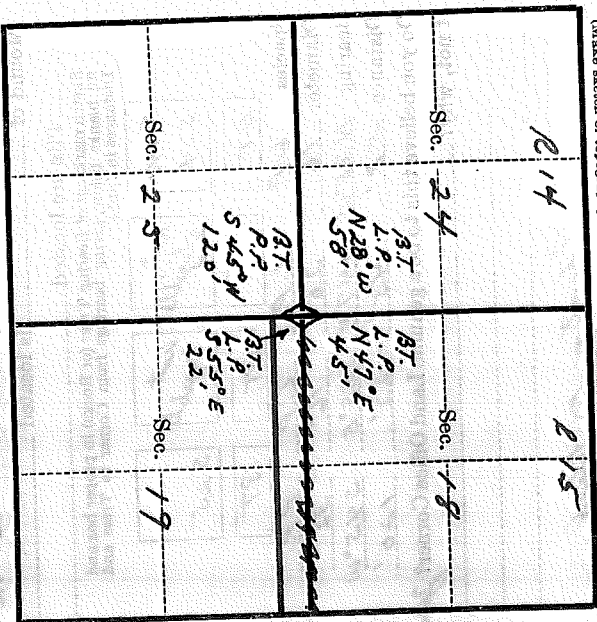
Oct 10, 1952

(Date)

Forester

(Title)

T. 225 R. 25E 14 Mer. 14  
 (Make sketch of topography near Corner and show section line markers thus "X")



Metal Location Poster is on a Redwood pine tree 32 inches diameter, on the North east side of tree from which this Corner bears N 45° E (Bearing) 120 ft (Distance)

Section line marker between Secs. 24 and 25 is on a tree on the Kelly & Bette Rd spur (Name of road, trail, etc.) located 15 chains W, 1/2 mi, from Sec. 18; 1/4 sec (Cross out nonapplicable)

Give any further facts needed to find Corner again:  
All trees are dead. The 32" pole  
marker is dead and standing; the  
other bearing trees are dying  
in the field.  
cut a road on corner, nearest found.

## Section Line Marker Record

Fire Road #25 Road or Trail Fort Rock District

Sec. Line between 27 & 28 T. 22 S. R. 14 E.

1/4 Cor. 400 Ft. N  
1/4 or Sec. feet N. S. E. or W.

Posted on S side R  
N. S. E. or W. R. or T.

Posted 11/2/55 By Bigelow  
Date

(Approx. \_\_\_\_\_)

Cor. Found (Exact. X \_\_\_\_\_)

(Paced X \_\_\_\_\_)

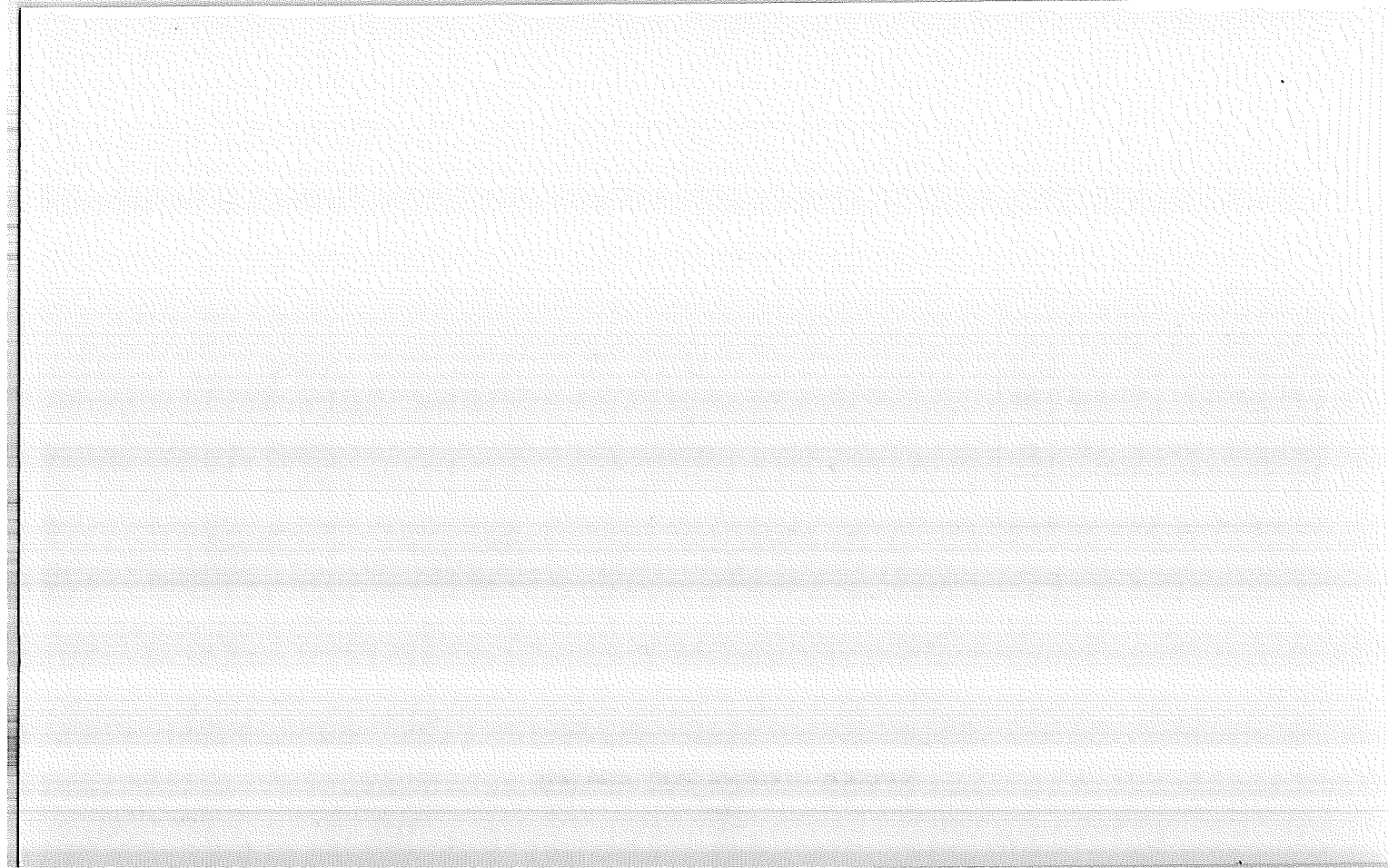
Distance (Chained \_\_\_\_\_)

6	5	4	3	2	1
7	8	9	10	11	12
18	17	16	15	14	13
19	20	21	22	23	24
30	29	28	27	26	25
31	32	33	34	35	36

Indicate position of marker by  
red X

If marker is on Twp. or Rge. line, reference TWP. NORTH or Rge. EAST of that line.





Index  
File No. \_\_\_\_\_

**CORNER RECORD (SEARCH)**

(Ref. FSM 7151.4)

Tract or  
Survey No. \_\_\_\_\_

Cor.  
No. T-21

T 22 S R. 14 E

R.D. Ft. Rock County Deschutes

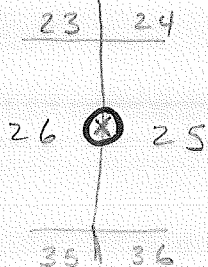
E/4 Cor Sec 26

Merid. Willamette

N.F. Dechutes State Oregon

W/4 Cor Sec 25

**CORNER DIAGRAM**



**DESCRIBE CORNER MONUMENT FOUND**

**DESCRIBE BEARING TREES OR OTHER OFFICIAL ACCESSORIES FOUND**

**PHOTO IDENTIFICATION DATA**

Photo No. 24-242

Filed At. \_\_\_\_\_

Object Ident. \_\_\_\_\_

Ident. By Youngs

*Signature*

**PLANE COORDINATE POSITION DATA**

State \_\_\_\_\_ Zone \_\_\_\_\_

X \_\_\_\_\_

Y \_\_\_\_\_

Estab. By \_\_\_\_\_

*Agency*

Bearing tree stumps

**DESCRIBE CORNER LOCATION RELATIVE TO NEAR-BY FEATURES, ALSO HOW TO REACH CORNER**

Signature

Title

Division

Headquarters

Date

7100-52 (3/68)

CORNER RECORD (PERPETUATION)

MONUMENT : DESCRIBE NEW MONUMENT SET, OR WORK DONE TO PRESERVE EXISTING MONUMENT

9

ACCESSORIES : DESCRIBE NEW BT'S WITNESS OBJECTS ETC. ESTABLISHED, OR WORK DONE TO PRESERVE EXISTING EVIDENCE

Bearing tree stumps found and posted with  
metal B+ Tags

10

Work Done By. Youngs Title Forestry Aid Date 9-1-71 State Registration No. \_\_\_\_\_  
or Agency \_\_\_\_\_

Certified Cor. Record Prepared ? Yes  No  Filed At: \_\_\_\_\_ Date \_\_\_\_\_

11

REMARKS

12

Index File No.

T.

R.

M.

Tract or Surv. No.

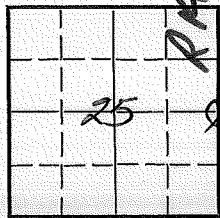
Cor. 7-21 13

LAND CORNER RECORD

T-25 5680-2

1. T. 22S R. 14E No. T-25 Cor. 1/4 Mer. Wm. State Oregon (Rectangular) N. F. Deschutes Dist. Fort Rock

2. Corner Status



3. Original Description \_\_\_\_\_ Vol. \_\_\_\_\_ Page \_\_\_\_\_ Where Recorded \_\_\_\_\_

4. Description of Corners:

5. Investigation Notes:

B.T. 2 found

7. Photo Identification

Photo No. \_\_\_\_\_

Ident. By: \_\_\_\_\_

8. Plane Coordinate Position Data

State \_\_\_\_\_ Zone \_\_\_\_\_

X \_\_\_\_\_

Y \_\_\_\_\_

Estab. By \_\_\_\_\_

Field Book No. \_\_\_\_\_

Where Filed \_\_\_\_\_

9. Evaluation

Authentic \_\_\_\_\_

Needs Verif. \_\_\_\_\_ Monument No

Re-estab. X Survey \_\_\_\_\_

Land Status F.S.

6. Signed D.M. Miller Title \_\_\_\_\_ Date 1967

D-7100-52d (10/78)  
USDA-FOREST SERVICE

Index \_\_\_\_\_  
File No. 0871  
T 22 S. R. 14 E. R.D. FT. ROCK County DESCHUTES Tract or Survey No. \_\_\_\_\_ Cor. No. V-01  
Merid. WILLAMETTE N.F. DESCHUTES State OREGON NW Coy Sec 31  
SE Coy Sec 25

SEE: V-25  
T22S R13E

BC Self  
1979

LAND CORNER RECORD

(Rectangular)

V-5

5680-2

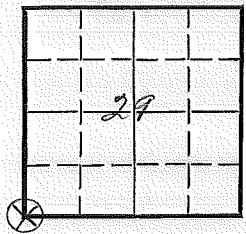
1. T 22S R14E No. 1-5 Cor. Sec. Mer. Will State Oregon N. F. Deschutes Dist. Fort Rock

2. Corner Status

3. Original Description Vol. Page Where Recorded

4. Description of Corners: Stake Not in Place - BT = T22S-R14E Sec. 32 - PP-Dia. 37.3 Bearing S47°E Dis 34'7" BT = T22S-R14E Sec. 31 - PP-Dia. 11.5 - Bearing S26°W Dis - 19'6" BT = T22S-R14E Sec. 30 - PP-Dia 18.9 - Bearing N42°W Dis 35'4" BT = Sec. 29 PP-Dia. 17.6 Bearing N37°E Dis - 60°

5. Investigation Notes: Metal Post on PP 27.3" Dia. NW side - Bearing N47°W Distance 34'7" To Corner. BT for 17.6 is set by 4 Standings. Also the BT for 11.5



7. Photo Identification Photo No. Ident. By:

8. Plane Coordinate Position Data State Zone X Y Etab. By Field Book No. Where Filed

9. Evaluation Authentic Needs Verif. Monument Re-estab. Survey Land Status

6. Signed G.M. Beil Title Forester Date Aug 22 - 1952

PERPETUATION RECORD

10. Monument:

11. Accessories

Field Book \_\_\_\_\_ Page \_\_\_\_\_

12. Set By \_\_\_\_\_ Title \_\_\_\_\_

License \_\_\_\_\_ Agency \_\_\_\_\_ Date \_\_\_\_\_

13. Recorded By \_\_\_\_\_ Volume \_\_\_\_\_ Page \_\_\_\_\_  
(Agency)

(Date) \_\_\_\_\_ (City) \_\_\_\_\_ (County) \_\_\_\_\_ (State) \_\_\_\_\_

14. Remarks:

U. S. Department of Agriculture  
FOREST SERVICE

Deschutes NATIONAL FOREST  
CORNERS OF THE PUBLIC SURVEY

T. 22 S. R. 14 E Williamette Mer.

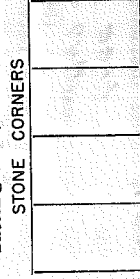
Section Corner common to Sections  
29, 30, 31, and 32

Corner consists of a stake (not in place)

State condition Assumed

Dimensions above ground \_\_\_\_\_ inches.  
Sketch grooves, letters, figures, or notches, on proper face or edge.

METAL CORNERS



N W S E  
Mound of \_\_\_\_\_ is located \_\_\_\_\_

Pits are located \_\_\_\_\_

Sketch markings of Bearing Trees (or Rocks) in proper box and fill blanks below, giving bearings from Corner to Trees and Distances in Links.

T24S  
R14E  
S32

BT

T22S  
R14E  
S31

BT

T22S  
R14E  
S30

BT

S29

BT

Species	<u>P.P.</u>	<u>P.P.</u>	<u>P.P.</u>	<u>P.P.</u>
Diameter	<u>37.3"</u>	<u>11.5"</u>	<u>18.9"</u>	<u>17.6"</u>
Bearing	<u>S47E</u>	<u>S26.0W</u>	<u>N42.4W</u>	<u>N37E</u>
Distance	<u>34.7'</u>	<u>19.6'</u>	<u>35.4'</u>	<u>60.0'</u>

Do you believe this to be a genuine Land Office Corner? Yes  
If not, why? \_\_\_\_\_

Charles M. Bail

(Signature)

Aug 23, 1952

(Date)

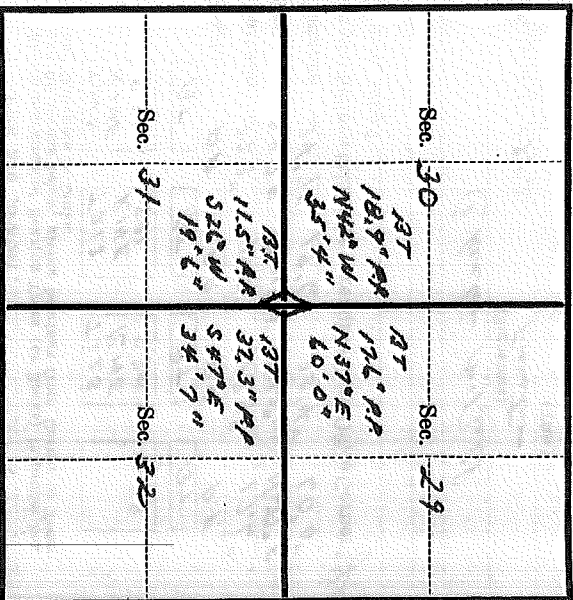
Forester

(Title)



T. 22 S R. 14 E W Mer.

(Make sketch of topography near Corner and show section line markers thus "X")



Metal Location Poster is on a Ponderosa pine tree 2.3 inches diameter, on the Northwest

side of tree from which this Corner bears N 72° W, 34' 7" Chains. (Bearing) (Distance)

Section line marker between Secs. 31 and 32, is on a tree on the Logging road (Tree, post, etc.) (Name of road, trail, etc.) located 49 chains 1/2 S. from Sec. 31; 40 chains 1/2 W. (Cross out nonapplicable).

Give any further facts needed to find Corner again:

The 124" ponderosa pine is dead and standing. The 11.5" ponderosa pine is dead and standing.

V-5

### Section Line Marker Record

#2205 Cinder Pit Road or Trail Fort Rock District

Sec. Line between 29 & 30 T. 22 S. R. 11 E.

*Also 570' S. of cor.*

Sec.          Cor. 590 Ft. S  
¼ or Sec.                      feet                      N. S. E. or W.

Posted on S side R  
N. S. E. or W.                      R. or T.

Posted 10/10/55 By Bigelow  
Date

(Approx. \_\_\_\_\_)

Cor. Found (Exact. X \_\_\_\_\_)

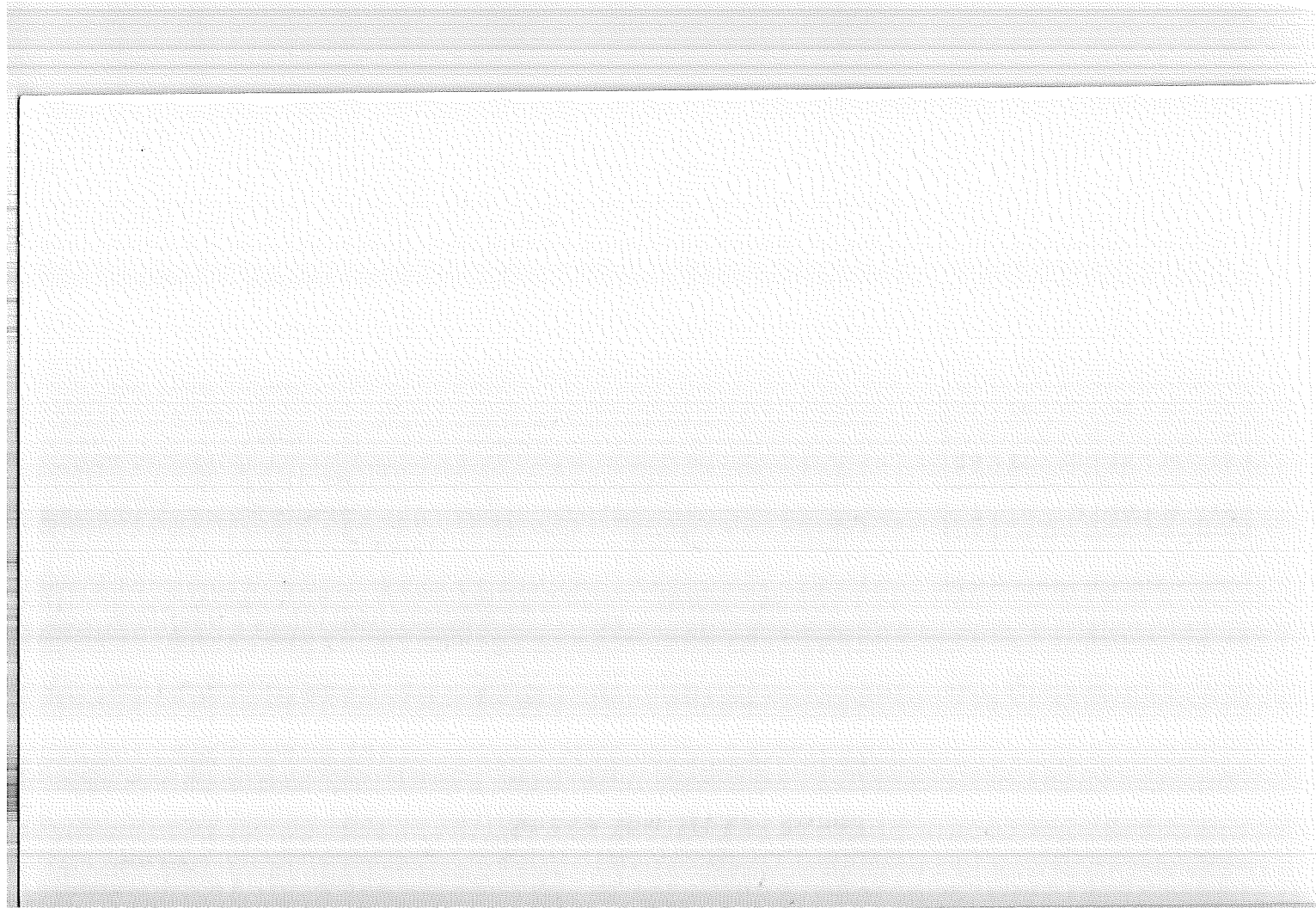
(Paced X \_\_\_\_\_)

Distance (Chained \_\_\_\_\_)

6	5	4	3	2	1
7	8	9	10	11	12
18	17	16	15	14	13
19	20	21	22	23	24
30	29	28	27	26	25
31	32	33	34	35	36

Indicate position of marker by  
red X

If marker is on Twp. or Rge. line, reference TWP. **NORTH** or Rge. **EAST** of that line.



LAND CORNER RECORD

V-7

5680-2

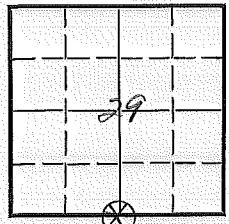
(Rectangular)

1. T. 22S R. 14E No. V-7 Cor. 1/4 Mer. Will State Oregon N. F. Deschutes Dist. Fort Rock

2. Corner Status

3. Original Description Vol. Page Where Recorded

4. Description of Corners: BT. 1/4 S = PP - 24.2" Dia. Bearing S 12° W. Dis. 22'



Sec. 32

5. Investigation Notes: Metal Paster on LP Pine 5.1" Dia on west side of tree. Bearing S 22° W Dis. 4.7 FT.

7. Photo Identification

Photo No. \_\_\_\_\_  
Ident. By: \_\_\_\_\_

8. Plane Coordinate Position Data

State \_\_\_\_\_ Zone \_\_\_\_\_  
X \_\_\_\_\_  
Y \_\_\_\_\_  
Estab. By \_\_\_\_\_  
Field Book No. \_\_\_\_\_  
Where Filed \_\_\_\_\_

9. Evaluation

Authentic \_\_\_\_\_  
Needs Verif. \_\_\_\_\_ Monument No  
Re-estab.  Survey \_\_\_\_\_  
Land Status FS

6. Signed C.M. Beil Title Forester Date Sept. 9-1953

# PERPETUATION RECORD

10. Monument:

11. Accessories

12. Set By \_\_\_\_\_ Title \_\_\_\_\_  
License \_\_\_\_\_ Agency \_\_\_\_\_ Date \_\_\_\_\_

13. Recorded By \_\_\_\_\_ (Agency) \_\_\_\_\_ Volume \_\_\_\_\_ Page \_\_\_\_\_  
(Date) (City) (County) (State)

14. Remarks:

U. S. Department of Agriculture  
FOREST SERVICE

*Reschutes* NATIONAL FOREST  
CORNERS OF THE PUBLIC SURVEY

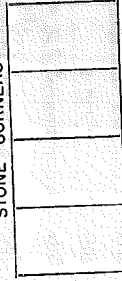
T. *22 S.* R. *14 E* *Willamette Mer.*  
*1/4 Section* Corner common to Sections

*29*, and *32*  
Corner consists of a *Stake* (not) in place

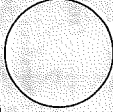
State condition *Assumed*  
Dimensions above ground \_\_\_\_\_ inches.

Sketch grooves, letters, figures, or notches, on proper face or edge.

STONE CORNERS



METAL CORNERS



N W S E  
Mound of \_\_\_\_\_ is located \_\_\_\_\_

Pits are located \_\_\_\_\_

Sketch markings of Bearing Trees (or Rocks) in proper box and fill blanks below, giving bearings from Corner to Trees and Distances in Links.

*1/4 5*

*BT*

Species *RF*

Diameter *3.42"*

Bearing *S 12° W*

Distance *22'*

Do you believe this to be a genuine Land Office Corner? *Yes*  
If not, why? \_\_\_\_\_

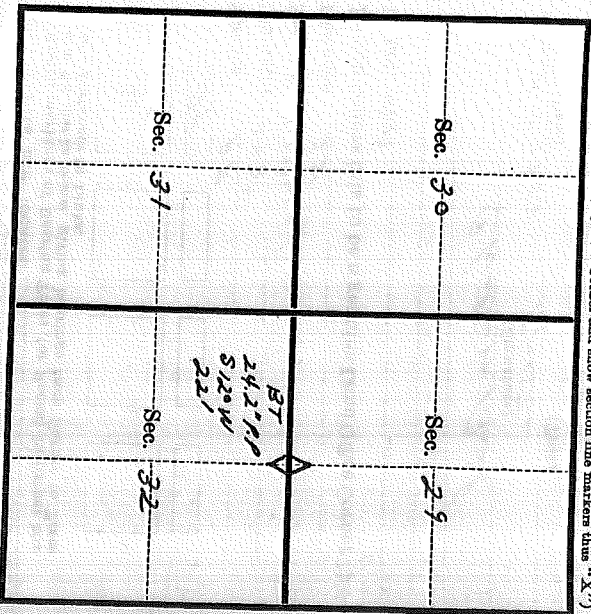
*Cheterson Paul*  
(Signature)

*April 9, 1953*  
(Date)

*Forester*  
(Title)

T. 22 S. R. 14 E. W. W Mer.

(Make sketch of topography near Corner and show section line markers thus "X")



Metal Location Poster is on a Lodgepole pine  
tree 51 inches diameter, on the west

side of tree from which

this Corner bears S 22° W 1', 4.7 1/4 Chassis.  
(Bearing) (Distance)

Section line marker between Secs. 27 and 34 is on

a tree on the Chain Hat Rd is on  
(Tree, post, etc.) (Name of road, trail, etc.)

located 145 chains Q from Section, 1/4 on; W.  
(Cross out nonapplicable)

Give any further facts needed to find Corner again:

-----  
-----  
-----  
-----  
-----  
-----  
-----  
-----

## Section Line Marker Record

#2228 - Cinder Cone Road or ~~Twp~~ Fort Rock District

Sec. Line between 20 &amp; 29 T. 22 S. R. 14 E.

1/4 Cor. 330 Ft. W  
1/4 or Sec. feet N. S. E. or W.Posted on N side Rd.  
N. S. E. or W. R. or T.Posted 8-3-55 By C. Bigelow  
Date

(Approx. \_\_\_\_\_)

Cor. Found (Exact.  \_\_\_\_\_)(Paced  \_\_\_\_\_)

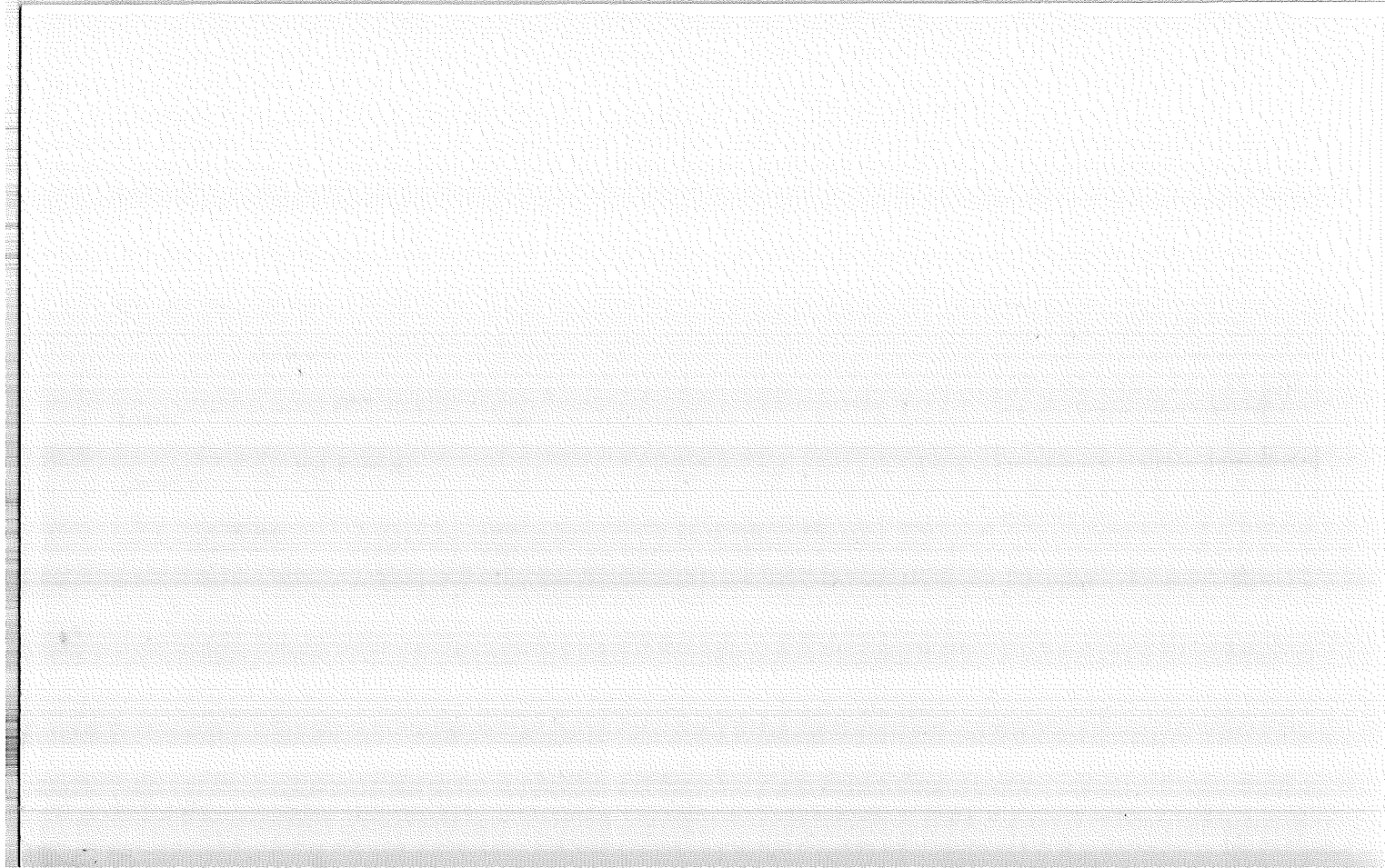
Distance (Chained \_\_\_\_\_)

6	5	4	3	2	1
7	8	9	10	11	12
18	17	16	15	14	13
19	20	21	22	23	24
30	29	28	27	26	25
31	32	33	34	35	36

Indicate position of marker by  
red X

If marker is on Twp. or Rge. line, reference TWP. NORTH or Rge. EAST of that line.





LAND CORNER RECORD  
(Rectangular)

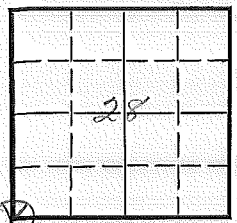
1. T. 22S R. 14E No. V-9 Cor. Sec. Mer. Will State Oregon N. F. Deschutes Dist. Text Rock

2. Corner Status

3. Original Description ✓ Vol. \_\_\_\_\_ Page \_\_\_\_\_ Where Recorded \_\_\_\_\_

4. Description of Corners: BT - T22S-R14E - PP - Dia. 14" Bearings S28°W Dis 26.6'  
Corner = a stake not in place.

5. Investigation Notes: Metal Post on P.P. 14" Dia. on East side -  
Bearings N78°E - Dis 26.6' to Corner



7. Photo Identification

Photo No. \_\_\_\_\_  
Ident. By: \_\_\_\_\_

8. Plane Coordinate Position Data

State \_\_\_\_\_ Zone \_\_\_\_\_  
X \_\_\_\_\_  
Y \_\_\_\_\_  
Estab. By \_\_\_\_\_  
Field Book No. \_\_\_\_\_  
Where Filed \_\_\_\_\_

9. Evaluation

Authentic \_\_\_\_\_  
Needs Verif. Monument Ne  
Re-estab. ✓ Survey  
Land Status FS

6. Signed C.M. Bail Title Forester Date July 31 - 1952

# PERPETUATION RECORD

10. Monument:

11. Accessories

12. Set By \_\_\_\_\_ Title \_\_\_\_\_  
License \_\_\_\_\_ Agency \_\_\_\_\_ Date \_\_\_\_\_

13. Recorded By \_\_\_\_\_ (Agency) \_\_\_\_\_ Volume \_\_\_\_\_ Page \_\_\_\_\_  
(Date) \_\_\_\_\_ (City) \_\_\_\_\_ (County) \_\_\_\_\_ (State)

14. Remarks:

12-4

**U. S. Department of Agriculture**  
FOREST SERVICE

*Deschutes* NATIONAL FOREST  
**CORNERS OF THE PUBLIC SURVEY**  
*Williamette* Mer.

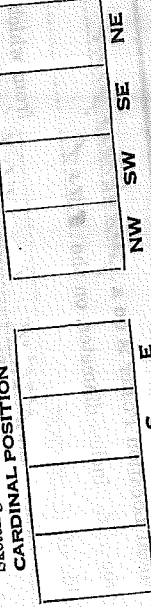
T. 225 R. 14E Corner common to SectionsSection 28, 29, 31, and 32 ~~(not)~~ in place  
5 StakeCorner consists of a Assumed

State condition \_\_\_\_\_ inches

Dimensions above ground \_\_\_\_\_

Sketch grooves, letters, figures, or notches; on proper face or edge.

CARDINAL POSITION



Mound of \_\_\_\_\_ is located \_\_\_\_\_

Pits are located \_\_\_\_\_

Sketch markings of Bearing Trees (or Rocks) in proper box and  
fill blanks below, giving bearings from Corner to Trees and  
Distances in Links.

T <sub>225</sub> R <sub>14E</sub>			
BT			

Species RPDiameter 14 3/4Bearing ~~42° 30'~~ 57° WDistance 24.6'Do you believe this to be a genuine Land Office Corner? Yes

If not, why? \_\_\_\_\_

*Chester M. Baird*  
(Signature)

*Forester*  
(Title)

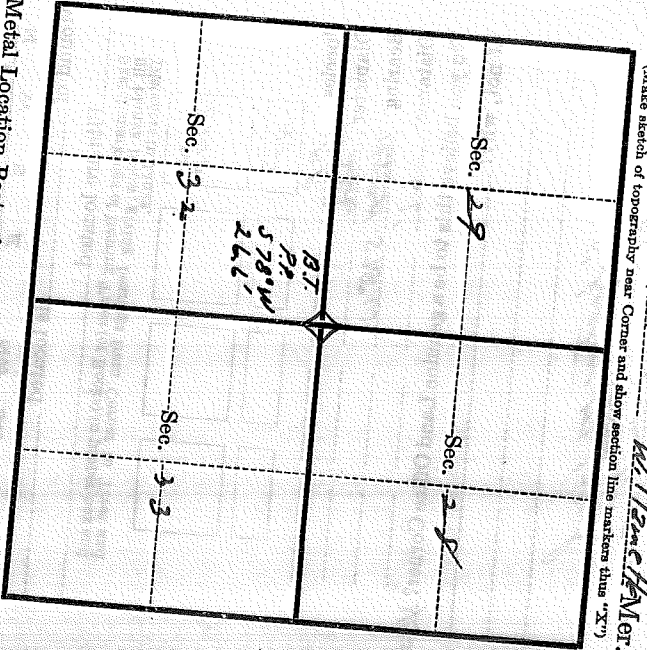
July 31 1932  
(Date)

T. 22 S

R. 14 W

W 1/2 sec 29 Mer.

(Make sketch of topography near Corner and show section line markers thus "X")



Metal Location Poster is on a ponderosa pine tree 14 inches diameter, on the east side of tree

this Corner bears N78°E, 26.6 from which

Section line marker between Secs. 32 and 33 is on tree (Bearing) (Distance) Chains

located 181 chains W from Sec. 32 (Name of road, trail, etc.) 6, 203 (Cross out nonapplicable)

Give any further facts needed to find Corner again:

The BT marker is visible in  
topography after all the scrub  
has been cleared in the spring  
and it is marked by a stump with  
the top of the marker visible  
the trees have been cut down  
6 miles down the road

## Section Line Marker Record

Fire Road #29B Road or Trail Fort Rock District

Sec. Line between 29 & 32 T. 22 S. R. 14 E.

Sec.          Cor. 386 Ft. E  
¼ or Sec. feet N. S. E. or W.

*Also 1056' S. of cor.*

Posted on W side R  
N. S. E. or W. R. or T.

Posted 5/23/57 By M.L.C.  
Date

(Approx.         )

Cor. Found (Exact. X)

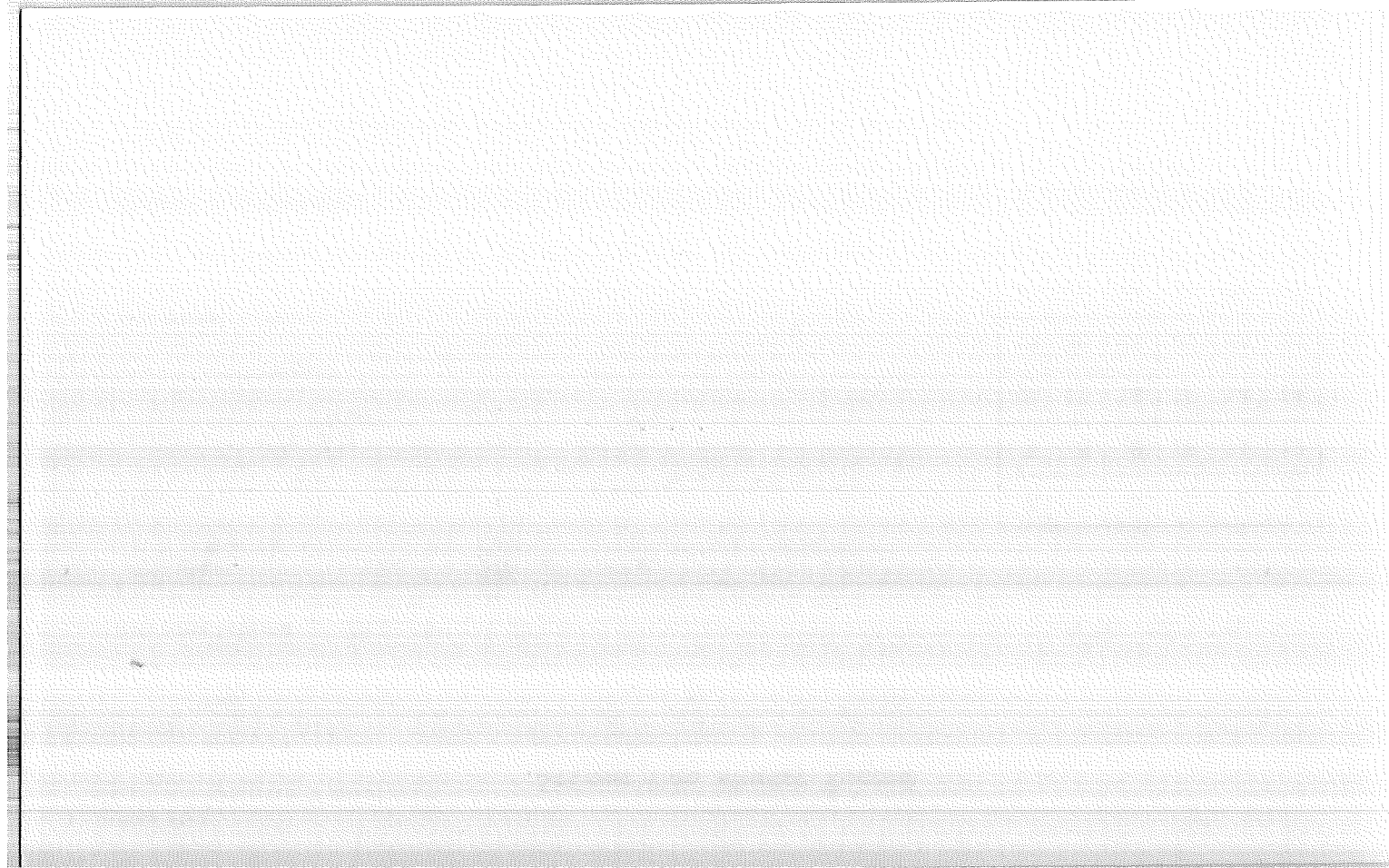
(Paced X)

Distance (Chained         )

6	5	4	3	2	1
7	8	9	10	11	12
18	17	16	15	14	13
19	20	21	22	23	24
30	29	28	27	26	25
31	32	33	34	35	36

Indicate position of marker by  
red X

If marker is on Twp. or Rge. line, reference TWP. NORTH or Rge. EAST of that line.



Index  
File No. V-13

CORNER RECORD (SEARCH)

(Ref. FSM 7151.4)

Tract or Survey No. V-13  
Cor. No. V-13

T 22S R. 14E

R.D. Fort Rock County Deschutes

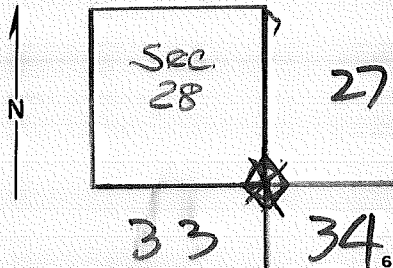
See cor

Merid. Will

N.F. Deschutes State Ore

CORNER DIAGRAM

DESCRIBE CORNER MONUMENT FOUND



DESCRIBE BEARING TREES OR OTHER OFFICIAL ACCESSORIES FOUND

SE. BT. - Good condition - USFS. BT. Tag.

PHOTO IDENTIFICATION DATA

Photo No. GS-VDOH

Filed At. Menlo Park, Ca.

Object Ident. BT Ident

Ident. By J.N. Tennant USGS

5/77 Signature 7

DESCRIBE CORNER LOCATION RELATIVE TO NEAR-BY FEATURES, ALSO HOW TO REACH CORNER

(Line 2 - Exposure 149)

PLANE COORDINATE POSITION DATA

State \_\_\_\_\_ Zone \_\_\_\_\_

X \_\_\_\_\_

Y \_\_\_\_\_

Estab. By \_\_\_\_\_

Agency 8

Signature

Title

Division

Headquarters

Date

7100-52 (3/68)



CORNER RECORD (PERPETUATION)

MONUMENT : DESCRIBE NEW MONUMENT SET, OR WORK DONE TO PRESERVE EXISTING MONUMENT

9

ACCESSORIES : DESCRIBE NEW BT'S WITNESS OBJECTS ETC. ESTABLISHED, OR WORK DONE TO PRESERVE EXISTING EVIDENCE

10

Work Done By \_\_\_\_\_ Title \_\_\_\_\_ Date \_\_\_\_\_ State Registration No. or Agency \_\_\_\_\_

Certified Cor. Record Prepared ? Yes No Filed At: \_\_\_\_\_ Date \_\_\_\_\_

11

REMARKS

Index File No.

T.

R.

M.

Tract or Surv. No.

Cor. **V-13** 12  
13

Index  
File No. V-17

CORNER RECORD (SEARCH)

(Ref. FSM 7151.4)

Tract or  
Survey No. \_\_\_\_\_

Cor.  
No. V-17

T 22S R. 14E

R.D. Fort Rock

County Deschutes

See CN

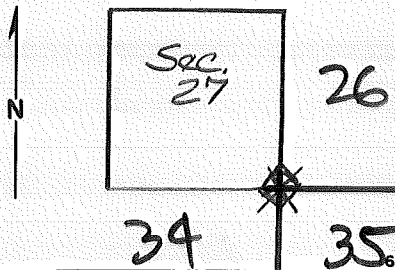
Merid. Will

N.F. Deschutes

State Ore.

CORNER DIAGRAM

DESCRIBE CORNER MONUMENT FOUND



DESCRIBE BEARING TREES OR OTHER OFFICIAL ACCESSORIES FOUND

S.E. BT. Down & dead  
N.E. BT. Down & dead  
N.W. BT. Broken stump } USFS BT. Tag

(Line 1 - Exposure 139)

PHOTO IDENTIFICATION DATA

Photo No. GS-VDOH  
Filed At. Mendo Park, Ca.  
Object Ident. Sketch  
Ident. By J.N. Tennant USGS

DESCRIBE CORNER LOCATION RELATIVE TO NEAR-BY FEATURES, ALSO HOW TO REACH CORNER

5/77 Signature J.N. Tennant USGS 7

PLANE COORDINATE POSITION DATA

State \_\_\_\_\_ Zone \_\_\_\_\_  
X \_\_\_\_\_  
Y \_\_\_\_\_  
Estab. By \_\_\_\_\_

Signature

Title

Division

Headquarters

Date

7100-52-(3/68)

CORNER RECORD (PERPETUATION)

MONUMENT: DESCRIBE NEW MONUMENT SET, OR WORK DONE TO PRESERVE EXISTING MONUMENT

ACCESSORIES : DESCRIBE NEW BT'S WITNESS OBJECTS ETC. ESTABLISHED, OR WORK DONE TO PRESERVE EXISTING EVIDENCE

Work Done By \_\_\_\_\_ Title \_\_\_\_\_ Date \_\_\_\_\_ State Registration No. or Agency \_\_\_\_\_

Unfiled Cor. Record Prepared ? Yes No Filed At: \_\_\_\_\_ Date \_\_\_\_\_

REMARKS

File No. T. R. M. Tract or Surv. No.

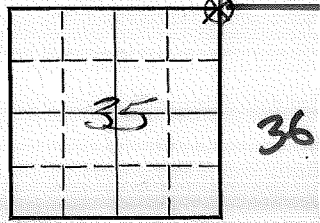
Cor. V-

LAND CORNER RECORD

V-21 5680-2

1. T T22S R 11E No. V-21 Cor. Sec Mer. Wm. State Oregon N. F. Deschutes Dist. Fort Rock

2. Corner Status 26 25



3. Original Description \_\_\_\_\_ Vol. \_\_\_\_\_ Page \_\_\_\_\_ Where Recorded \_\_\_\_\_

4. Description of Corners: \_\_\_\_\_

5. Investigation Notes: No corner found  
B.T. 36" pine stump - marked T22S R11E Sec 35 BT

7. Photo Identification  
Photo No. \_\_\_\_\_  
Ident. By: \_\_\_\_\_

8. Plane Coordinate Position Data  
State \_\_\_\_\_ Zone \_\_\_\_\_  
X \_\_\_\_\_  
Y \_\_\_\_\_  
Estab. By \_\_\_\_\_  
Field Book No. \_\_\_\_\_  
Where Filed \_\_\_\_\_

9. Evaluation  
Authentic \_\_\_\_\_  
Needs Verif. \_\_\_\_\_ Monument No  
Re-estab. X Survey \_\_\_\_\_  
Land Status F.S.

6. Signed D.M. Miller Title \_\_\_\_\_ Date 7/26/61

Index File No. 0173 CORNER RECORD (SEARCH) (Ref. FSM 7151.4) Tract or Survey No. Cor. No. X-01  
T 22 S. R. 14 E. R.D. FT. ROCK County DESCHUTES W/A Cor Sec 31  
Merid. WILLAMETTE N.F. DESCHUTES State OREGON E/A Cor Sec 36

SEE: X-25  
T 22 S R 13 E

BC Set  
1979

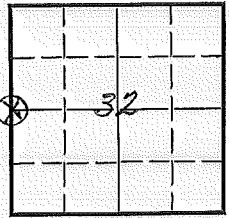
X-01

LAND CORNER RECORD  
(Rectangular)

X-5

1. T. 22S R. 14E No. X-5 Cor. 114 Mer. Will State Oregon N. F. Deschutes Dist. Fert Rock

2. Corner Status



3. Original Description \_\_\_\_\_ Vol. \_\_\_\_\_ Page \_\_\_\_\_ Where Recorded \_\_\_\_\_

4. Description of Corners: Stake not in Place  
BT-114 = LP 18" Dia. Bearings N45°W Dis. 14'5"  
BT-114 = LP 16" " " S 85°E. " 17'6"

5. Investigation Notes: Material Past on Northside of LP  
Both BTs down & level scribing on 16" LP hardly discernible  
scribing on other is very legible

7. Photo Identification

Photo No. \_\_\_\_\_  
Ident. By: \_\_\_\_\_

8. Plane Coordinate Position Data

State \_\_\_\_\_ Zone \_\_\_\_\_  
X \_\_\_\_\_  
Y \_\_\_\_\_  
Estab. By \_\_\_\_\_  
Field Book No. \_\_\_\_\_  
Where Filed \_\_\_\_\_

9. Evaluation

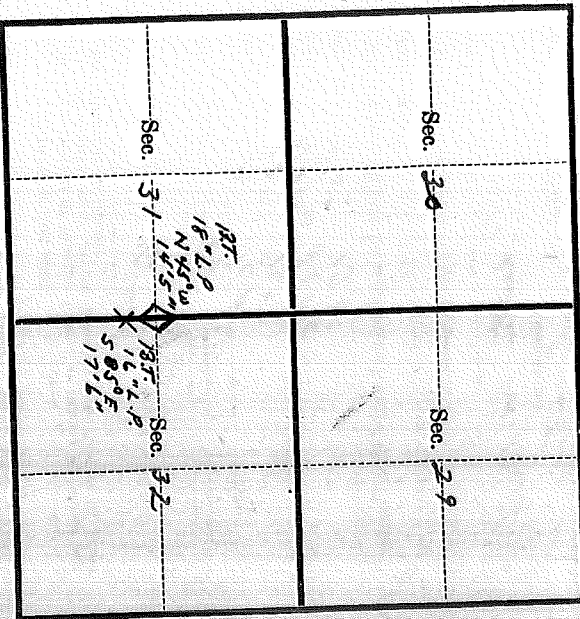
Authentic \_\_\_\_\_  
Needs Verif. \_\_\_\_\_ Monument No.  
Re-estab.  Survey \_\_\_\_\_  
Land Status Fed

6. Signed G. M. Beil Title Forester Date Sept 11-1952

Diameter \_\_\_\_\_  
Bearing N45°W  
Distance 14'5" 17'6"

T. 225 R. 14E W. W. Mer.

(Make sketch of topography near Corner and show section line markers thus "X")



Metal Location Poster is on a ledge pole pine

tree 3 inches diameter, on the north side of tree from which

this Corner bears 0 Chains. (Bearing) (Distance)

Section line marker between Secs. 31 and 32 is on

a tree on the logging road (Name of road, trail, etc.)

located 9 chains ~~from~~ from marker;  $\frac{1}{2}$  Cor.; ~~Witness-~~ located (Cross out nonapplicable)

Give any further facts needed to find Corner again:

13th bearing trees dead and down.

Sketching on the 16" L.P. hardly discern-

ible - only a part of the 8" on the

scribed BT can be read. The scribbling

on the other is very legible.



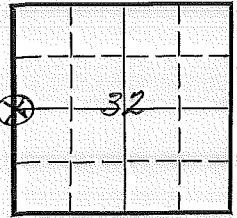
LAND CORNER RECORD  
(Rectangular)

X-5

1. T. 22S R. 14E No. X-5 Cor. 114 Mer. Will State Oregon N. F. Deschutes Dist. Tent Rock

2. Corner Status

3. Original Description \_\_\_\_\_ Vol. \_\_\_\_\_ Page \_\_\_\_\_ Where Recorded \_\_\_\_\_



4. Description of Corners: Stake not in Place.  
BT-1/4 = LP 18" Dia. Bearing N45°W Dis. 14'5"  
BT-1/4 = LP 16" " " S 85°E. " 17'6"

7. Photo Identification

Photo No. \_\_\_\_\_  
Ident. By: \_\_\_\_\_

5. Investigation Notes: Metal Post on North side of LP - - - -  
Both BTs down & head scribbles on 16" LP Hardly discernible  
Scribbles on other is very legible

8. Plane Coordinate Position Data

State \_\_\_\_\_ Zone \_\_\_\_\_  
 X \_\_\_\_\_  
 Y \_\_\_\_\_  
 Estab. By \_\_\_\_\_  
 Field Book No. \_\_\_\_\_  
 Where Filed \_\_\_\_\_

9. Evaluation

Authentic \_\_\_\_\_  
 Needs Verif. \_\_\_\_\_ Monument No.  
 Re-estab.  Survey \_\_\_\_\_  
 Land Status FD

6. Signed G.M. Beil Title Forester Date Sept 11-1952

PERPETUATION RECORD

10. Monument:

11. Accessories

12. Set By \_\_\_\_\_ Title \_\_\_\_\_  
License \_\_\_\_\_ Agency \_\_\_\_\_ Date \_\_\_\_\_

13. Recorded By \_\_\_\_\_ (Agency) \_\_\_\_\_ Volume \_\_\_\_\_ Page \_\_\_\_\_  
(Date) \_\_\_\_\_ (City) \_\_\_\_\_ (County) \_\_\_\_\_ (State)

14. Remarks:

LAND CORNER RECORD

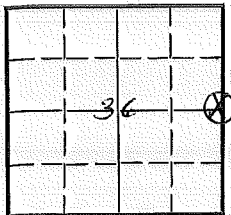
X-25

5680-2

(Rectangular)

1. T 22S R 14E No. X-25 Cor. 14 Mer. Will State Oregon N. F. Deschutes Dist. Fert Reed

2. Corner Status



3. Original Description \_\_\_\_\_ Vol. \_\_\_\_\_ Page \_\_\_\_\_ Where Recorded \_\_\_\_\_

4. Description of Corners: NOT IN PLACE

BT = T22S R14E 14 SEC. 36

5. Investigation Notes: METAL POSTER ON EAST SIDE OF PP 18" DIA. BEARING OF 90°- DIS. 7' TO CORNER

7. Photo Identification

Photo No. \_\_\_\_\_

Ident. By: \_\_\_\_\_

8. Plane Coordinate Position Data

State \_\_\_\_\_ Zone \_\_\_\_\_

X \_\_\_\_\_

Y \_\_\_\_\_

Estab. By \_\_\_\_\_

Field Book No. \_\_\_\_\_

Where Filed \_\_\_\_\_

9. Evaluation

Authentic \_\_\_\_\_

Needs Verif. \_\_\_\_\_ Monument No

Re-estab.  Survey \_\_\_\_\_

Land Status F.S.

6. Signed K. H. Tiller Title FCAG Date 8-12-57

PERPETUATION RECORD

10. Monument:

11. Accessories

Field Book \_\_\_\_\_ Page \_\_\_\_\_

12. Set By \_\_\_\_\_ Title \_\_\_\_\_

License \_\_\_\_\_ Agency \_\_\_\_\_ Date \_\_\_\_\_

13. Recorded By \_\_\_\_\_ Volume \_\_\_\_\_ Page \_\_\_\_\_  
(Agency)

(Date) \_\_\_\_\_ (City) \_\_\_\_\_ (County) \_\_\_\_\_ (State) \_\_\_\_\_

14. Remarks:

U. S. Department of Agriculture  
FOREST SERVICE

Deschutes NATIONAL FOREST  
CORNERS OF THE PUBLIC SURVEY

T. 22S R. 15E WillametteMer.  
1/4

Corner common to Sections  
, 36, and 31

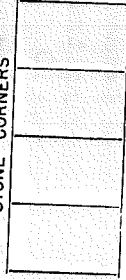
Corner consists of a ? (not a place)

State condition Assumed

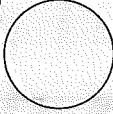
Dimensions above ground

Sketch grooves, letters, figures, or notches, on proper face or edge.  
inches.

STONE CORNERS



METAL CORNERS



N W S E

Mound of \_\_\_\_\_ is located \_\_\_\_\_

Pits are located \_\_\_\_\_

Sketch markings of Bearing Trees (or Rocks) in proper box  
and fill blanks below, giving bearings from Corner to Trees  
and Distances in Links.

See  
note on  
Back

--	--	--	--

--	--	--	--

--	--	--	--

--	--	--	--

Species \_\_\_\_\_

Diameter \_\_\_\_\_

Bearing \_\_\_\_\_

Distance \_\_\_\_\_

Do you believe this to be a genuine Land Office Corner  Yes  
If not, why? \_\_\_\_\_

K.H. Tiller  
(Signature)

8/12/57  
(Date)

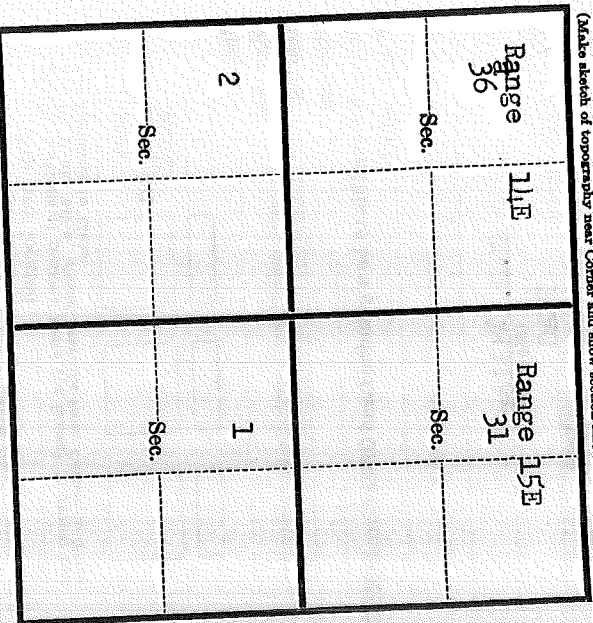
FCAG

(Title)

Form 8749  
Rev. Mar. 1953

T. 22S R. 15E W. Mer.

(Make sketch of topography near Corner and show section line markers thus "X")



Metal Location Poster is on a Ponderosa Pine

tree 18 inches diameter, on the East

side of Bearing tree 71 from which

this Corner bears 90 (Bearing) (Distance)

Section line marker between Secs. 36 and 31 is on

a Tree on the Poly Top Fire Rd.

(Tree, post, etc.) (Name of road, trail, etc.)

located 151 ft. from Sec. Post 1/4 Cor. Marker

(Cross out nonapplicable)

Give any further facts needed to find Corner again:

Scribing on Bearing tree not legible except

for 1/4 mark. Blaze for scribing can

be distinguished 1/4 corner for Sec. 36

T. 22S R. 15E

U. S. Department of Agriculture  
FOREST SERVICE

Describes NATIONAL FOREST  
CORNERS OF THE PUBLIC SURVEY

T. 22S R. 15E WillametteMer.

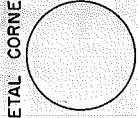
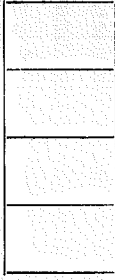
1/4 Corner common to Sections  
36, and 31

Corner consists of a ? (not in place)

State condition Assumed

Dimensions above ground inches.  
Sketch grooves, letters, figures, or notches, on proper face or edge.

STONE CORNERS



METAL CORNERS

N W S E

Mound of is located

Pits are located

Sketch markings of Bearing Trees (or Rocks) in proper box  
and fill blanks below, giving bearings from Corner to Trees  
and Distances in Links.

See  
note on  
back



Species

Diameter

Bearing

Distance

Do you believe this to be a genuine Land Office Corner YES  
If not, why?

K.H. Tiller  
(Signature)

FCAG

(Title)

8/12/57  
(Date)

Form 874-9  
Rev. Mar. 1953

T. 22S R. 15E W. Mer.  
(Make sketch of topography near Corner and show section line markers thus "X")

Range <u>36</u> Sec.	11E	Range <u>31</u> Sec.	15E
2 Sec.		1 Sec.	

Metal Location Poster is on a Ponderosa Pine

tree 18 inches diameter, on the East

side of Bearing tree from which  
this Corner bears 90 ° 71 Chains.

Section line marker between Secs. 36 and 31 is on

a Tree on the Poly Top Fire Rd.  
(Tree post, size, 1 1/2 ft. diam., N. 71 ft. from sec. 36 1/4 cor. 11 ft. from 31 corner)  
(Name of road, trail, etc.)  
(Chain link #, N. #, from sec. 36 1/4 cor. 11 ft. from 31 corner)  
(Cross out nonapplicable)

Give any further facts needed to find Corner again:

Scribing on Bearing tree not legible except  
for 1/4 mark. Blaze for scribing can

be distinguished 1/4 corner for Sec. 36

T. 22S R. 15E





Index  
File No. 0175 CORNER RECORD (SEARCH) Tract or Survey No. \_\_\_\_\_ Cor. No. 2-01  
(Ref. FSM 7151.4)  
T 22 S. R. 14 E. R.D. FT. ROCK County DESCHUTES SW Coy Sec 31  
Merid. WILLAMETTE N.F. DESCHUTES State OREGON SE Coy Sec 36

SEE: Z-25  
T 225 1913E

BC Left  
1979

2-01

Index File No. 2-5  
 T 225 R. 14E  
 Merid. Will

CORNER RECORD (SEARCH)

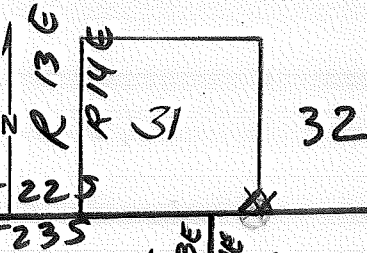
(Ref. FSM 7151.4)

R.D. Fort Rock County Lake  
 N.F. Deschutes State Ore.

Tract or Survey No. \_\_\_\_\_  
 Cor. No. 2-5

SE Sec Cor 3/4  
SW Cor Sec 32 ONLY

CORNER DIAGRAM



DESCRIBE CORNER MONUMENT FOUND

DESCRIBE BEARING TREES OR OTHER OFFICIAL ACCESSORIES FOUND

Found The NE. & SE Bearing Trees  
 USFS Tags

(Line 2-exposure 169)

PHOTO IDENTIFICATION DATA

Photo No. GS-VDOH  
 Filed At. Mano Park, Ca.  
 Object Ident. Sketch  
 Ident. By J.N. Tennant USGS  
9/77 Signature

DESCRIBE CORNER LOCATION RELATIVE TO NEAR-BY FEATURES, ALSO HOW TO REACH CORNER

PLANE COORDINATE POSITION DATA

State \_\_\_\_\_ Zone \_\_\_\_\_  
 X \_\_\_\_\_  
 Y \_\_\_\_\_  
 Estab. By \_\_\_\_\_  
 Agency

Signature

Title

Division

Headquarters

Date

7100-52-(3/68)

CORNER RECORD (PERPETUATION)

MONUMENT : DESCRIBE NEW MONUMENT SET, OR WORK DONE TO PRESERVE EXISTING MONUMENT

9

ACCESSORIES : DESCRIBE NEW BT'S WITNESS OBJECTS ETC. ESTABLISHED, OR WORK DONE TO PRESERVE EXISTING EVIDENCE

10

Work Done By \_\_\_\_\_ Title \_\_\_\_\_ Date \_\_\_\_\_ State Registration No. or Agency \_\_\_\_\_

Certified Cor. Record Prepared ? Yes No Filed At: \_\_\_\_\_ Date \_\_\_\_\_

11

REMARKS

Index File No.

T.

R.

M.

Tract or Surv. No.

Cor.

2-05<sup>13</sup>

12

Index  
File No. Z-9  
T 225 R. 14E  
Merid. Will

CORNER RECORD (SEARCH)

(Ref. FSM 7151.4)

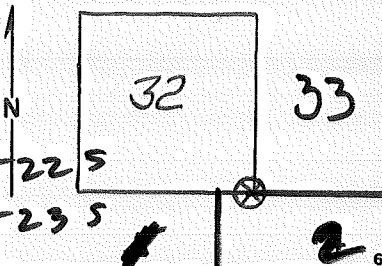
R.D. Fort Rock County Lake  
N.F. Deschutes State Ore

Tract or  
Survey No.

Cor.  
No. Z-9

SEC Co Sec 32 ONLY  
SW Co Sec 33

CORNER DIAGRAM



DESCRIBE CORNER MONUMENT FOUND

DESCRIBE BEARING TREES OR OTHER OFFICIAL ACCESSORIES FOUND

found the SE Bearing Tree with USFS. Tag.  
SW BT fd 1959 @ 51" PP  
(Line 2 - exposure 149)

PHOTO IDENTIFICATION DATA

Photo No. GS-100H  
Filed At. Menlo Park, Ca.  
Object Ident. BT Ident  
Ident. By J.N. Tennant USGS  
9/77 Signature

DESCRIBE CORNER LOCATION RELATIVE TO NEAR-BY FEATURES, ALSO HOW TO REACH CORNER

PLANE COORDINATE POSITION DATA

State \_\_\_\_\_ Zone \_\_\_\_\_  
X \_\_\_\_\_  
Y \_\_\_\_\_  
Estab. By \_\_\_\_\_  
Agency

Signature

Title

Division

Headquarters

Date

7100-52-(3/68)

CORNER RECORD (PERPETUATION)

MONUMENT : DESCRIBE NEW MONUMENT SET, OR WORK DONE TO PRESERVE EXISTING MONUMENT

9

ACCESSORIES : DESCRIBE NEW BT'S WITNESS OBJECTS ETC. ESTABLISHED, OR WORK DONE TO PRESERVE EXISTING EVIDENCE

10

Work Done By \_\_\_\_\_ Title \_\_\_\_\_ Date \_\_\_\_\_ State Registration No. or Agency \_\_\_\_\_

Certified Cor. Record Prepared ? Yes No Filed At: \_\_\_\_\_ Date \_\_\_\_\_

11

REMARKS

Index File No. T. R. M. Tract or Surv. No.

Cor. 2-09 13

Index

File No. \_\_\_\_\_

T 22S R. 14E

CORNER RECORD (SEARCH)

(Ref. FSM 7151.4)

Tract or

Survey No. \_\_\_\_\_

Cor. Z-17

No. \_\_\_\_\_

R.D. Fort Rock County Deschutes/Lake

SE COR. S.34

Merid. Willamette

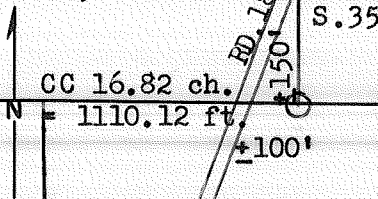
N.F. Deschutes

State Oregon

SW COR. S. 35 ONLY

CORNER DIAGRAM

S.34, T.22S.



DESCRIBE CORNER MONUMENT FOUND

DESCRIBE BEARING TREE OR OTHER OFFICIAL ACCESSORIES FOUND

DESCRIBE CORNER LOCATION RELATIVE TO NEAR-BY FEATURES, ALSO HOW TO REACH CORNER

PHOTO IDENTIFICATION DATA

Photo No. \_\_\_\_\_

Filed At. \_\_\_\_\_

Object Ident. \_\_\_\_\_

Ident. By \_\_\_\_\_

*Signature*

PLANE COORDINATE POSITION DATA

State \_\_\_\_\_ Zone \_\_\_\_\_

X \_\_\_\_\_

Y \_\_\_\_\_

Estab. By \_\_\_\_\_

*Agency*

*Signature*

Title  
PLS

Division

Headquarters  
DNF-SO

Date  
20 AUG 1976

7100-52 (3/68)

SEARCHED FOR - NOT FOUND

Index  
File No. Z-21  
T 22S R. 14E  
Merid. Will

**CORNER RECORD (SEARCH)**  
(Ref. FSM 7151.4)

Tract or Survey No. \_\_\_\_\_ Cor. No. Z-21  
R.D. Fort Rock County Deschutes SECN S. 35 ONLY  
N.F. Deschutes State Ore SWCN S. 36

CORNER DIAGRAM

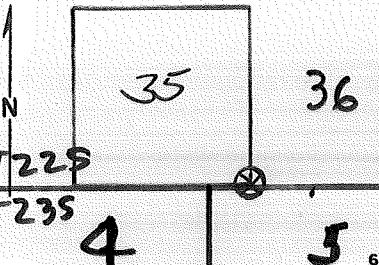


PHOTO IDENTIFICATION DATA  
Photo No. GS-VDOH  
Filed At. Meno Park, Ca.  
Object Ident. Sketch  
Ident. By J.N. Tannant USGS  
9/77 Signature

PLANE COORDINATE POSITION DATA  
State \_\_\_\_\_ Zone \_\_\_\_\_  
X \_\_\_\_\_  
Y \_\_\_\_\_  
Estab. By \_\_\_\_\_ Agency

DESCRIBE CORNER MONUMENT FOUND

DESCRIBE BEARING TREES OR OTHER OFFICIAL ACCESSORIES FOUND

SE. B.T. Found with USFS Tag.  
SW BT fd 5/63 14" L.P. w/ MKS.  
NW BT " " 16" L.P. " , DOWN  
(Line) - exposure 139

DESCRIBE CORNER LOCATION RELATIVE TO NEAR-BY FEATURES, ALSO HOW TO REACH CORNER

Signature \_\_\_\_\_ Title \_\_\_\_\_ Division \_\_\_\_\_ Headquarters \_\_\_\_\_ Date \_\_\_\_\_ 7100-52-(3/68)

2  
3  
4  
5



### Section Line Marker Record

Fire Road Road or Trail Fort Rock District

Sec. Line between 36 & 2 T. 22 S. R. 14 E.

1/4 Cor. 269 Ft. W  
¼ or Sec. feet N. S. E. or W.

Posted on W side R  
N. S. E. or W. R. or T.

Posted 8/12/57 By K. H. Tiller  
Date

(Approx. \_\_\_\_\_)

Cor. Found (Exact. X)

(Paced X)

Distance (Chained \_\_\_\_\_)

6	5	4	3	2	1
7	8	9	10	11	12
18	17	16	15	14	13
19	20	21	22	23	24
30	29	28	27	26	25
31	32	33	34	35	36

Indicate position of marker by red X

If marker is on Twp. or Rge. line, reference TWP. NORTH or Rge. EAST of that line.